



GALLERIA PRESENTS AIR COLLECTION

PRESENTATION CENTRE • 1152 DUPONT STREET • GALLERIAONTHEPARK.COM • SALES@GALLERIONTHEPARK.COM • 416-486-9666

Galleria On The Park is Toronto's most inspired new neighbourhood of condominiums, shops and places to gather, all located next to an incredible 8-acre park and a brand new 95,000sq ft. state-of-the-art community centre. Living at Galleria immerses you in a premium wellness lifestyle, with convenient access to on-site creative office spaces, high quality retail outlets, and excellent transit connections. Walkable, generous sidewalks lined with trees and plants, and colourfully patterned streets create an ideal environment for urban living.

Introducing Galleria III - The Third Chapter In The Story Of Galleria On The Park, And Your Next Opportunity To Purchase In This New Community.

TOWER COLLECTION

Unit Type	Unit Model	Unit Size (Sq Ft.)	Ext (Sq Ft.)	Exposure	Starting Price	Starting Floor (Higher floors may be available)
3BR	3B 975	975	52	WEST	\$1,151,900	10
3BR	3B 994	994	360	SOUTH EAST NORTH	\$1,239,900	9
2BR	2BR 1046	1046	85	NORTH	\$1,229,900	10
3BR+D	3B+D 1110	1110	158	NORTH WEST	\$1,321,900	9

TERRACE COLLECTION

Unit Type	Unit Model	Unit Size (Sq Ft.)	Ext (Sq Ft.)	Exposure	Starting Price	Starting Floor (Higher floors may be available)
2B+D	2B+D 917	917	477	NORTH WEST	\$1,149,900	3
3BR	3B 973	973	155	SOUTH	\$1,103,900	4
3BR	3B 1018	1018	269	WEST	\$1,201,900	8
3BR	3B 1225	1225	360	SOUTH EAST NORTH	\$1,463,900	4
3BR	3B 1250	1250	270	SOUTH EAST NORTH	\$1,501,900	3
3BR	3B 1250	1250	872	SOUTH WEST	\$1,591,900	8
3BR	3B 1426	1426	3,298	SOUTH EAST NORTH	\$1,999,900	8

Galleria on the Park III Limited Time Incentives!!

Capped Development Charges:

\$0 on current Development & Educational Charges (Savings up to \$45,000)

Potential Increases On Development & Education Charges Capped:

Studio/1 BR/1 BR + Flex/Den: \$8,500
2 BR and larger \$10,500

Right to Lease During Occupancy

Free Assignment*

Free Island For Three Bedroom Units

Estimated Occupancy:

December 2025

LIMITED TIME DEPOSIT STRUCTURE PROMOTION - AS LOW AS ONLY 15% DOWN UNTIL OCCUPANCY ON SELECT UNITS!*

Preferred Extended Deposit Structure

\$5,000 on signing
Balance to 5% in 30 days
5% in 150 days
5% in 720 days
5% on Occupancy

Maintenance: \$0.61 /sq.ft.

Including: High Speed Internet & Elad Link Tech Package

Excluding: Water, Hydro, Heat

Property Taxes:

Approximately 1%

Parking: \$100,000 (Parking Available For 3BR Suites)
Locker: ~~\$40,000~~ \$7,500

Parking Maintenance: \$59.95
Locker Maintenance: \$29.95

ELAD CANADA

PSR
BROKERAGE

PRICES AND SPECIFICATIONS SUBJECT TO CHANGE WITHOUT NOTICE. E. & O.E. May 7, 2022

*On the first Assignment for qualifying Assignee subject to vendor's conditions for Assignments being met. Please see Sales Representative for details.

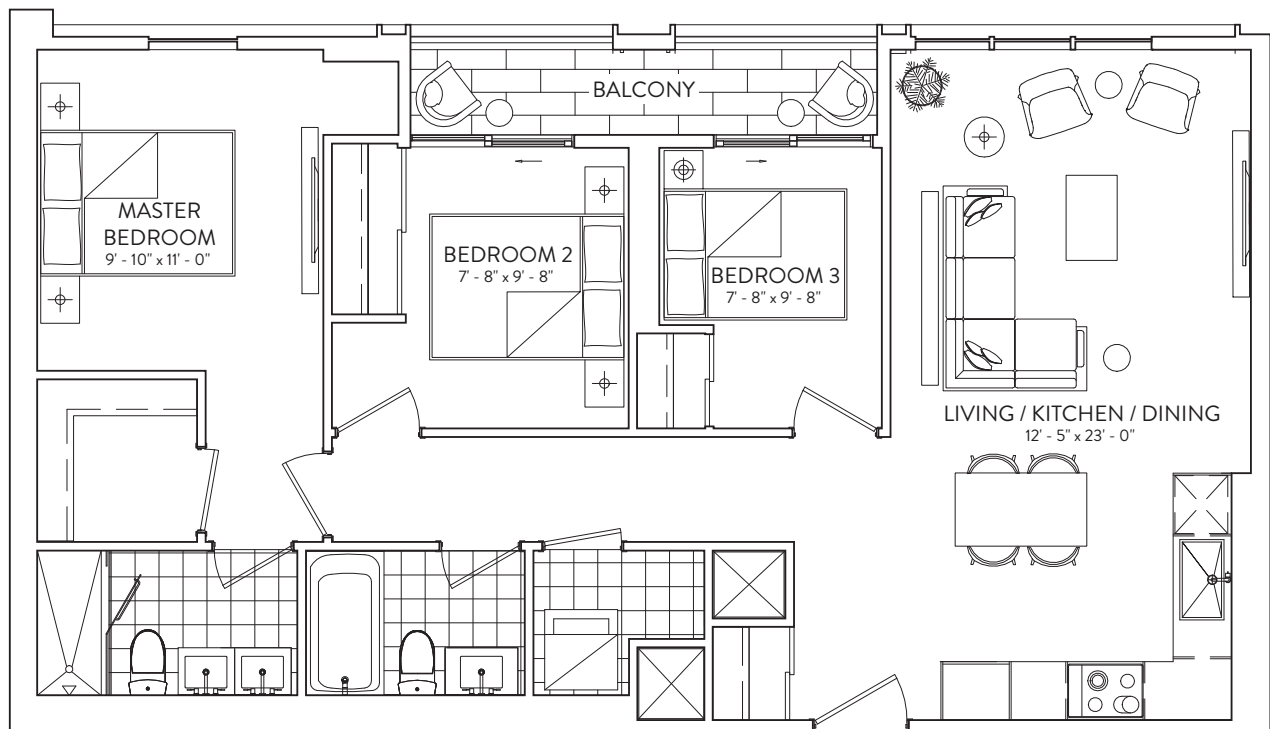
Note: This Limited Time offer may be changed or withdrawn at any time without notice. This offer may not be combined with any other offer or promotion. Certain conditions apply. Premiums apply to floors, balconies, terraces and views. Please see sales representative for details. **RESIDENTIAL MAINTENANCE FEES PROVIDED AS A CREDIT ON CLOSING; VALUE OF PROMOTION DEPENDENT UPON UNIT; CONSULT WITH SALES REPRESENTATIVE FOR FURTHER DETAILS.. E & O.E.

3B 975

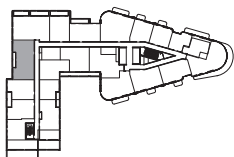
3 BEDROOM | 2 BATHROOM

INTERIOR: 975 SF | EXTERIOR: 52 SF

GALLERIA



FLOORS 9-10



This plan is not to scale and is subject to architectural review and revision. The number of units per Floor and the number of floors may be reduced or increased at the vendor's sole discretion without notice. The purchaser acknowledges that the actual unit purchased may be a reverse layout to the plan shown. All materials, specifications, details and dimensions, if any, are approximate and subject to change without notice in order to comply with building site conditions and municipal, structural, vendor and/or architectural requirements. Actual living areas may vary from floor area stated. Floor areas have been measured and may vary in accordance with Bulletin #22 published by the Tarion Warranty Corporation. Bulkheads are not shown on this plan and may be located in areas of the Unit as required to provide venting and mechanical systems. Balconies, Terraces and Patios, if any, are exclusive use common elements shown for display purposes only and location and size are subject to change without notice. Window location, size and type may vary without notice. The length, width and directional position of the flooring are for illustration purposes only and may vary without notice. E.&O.E.

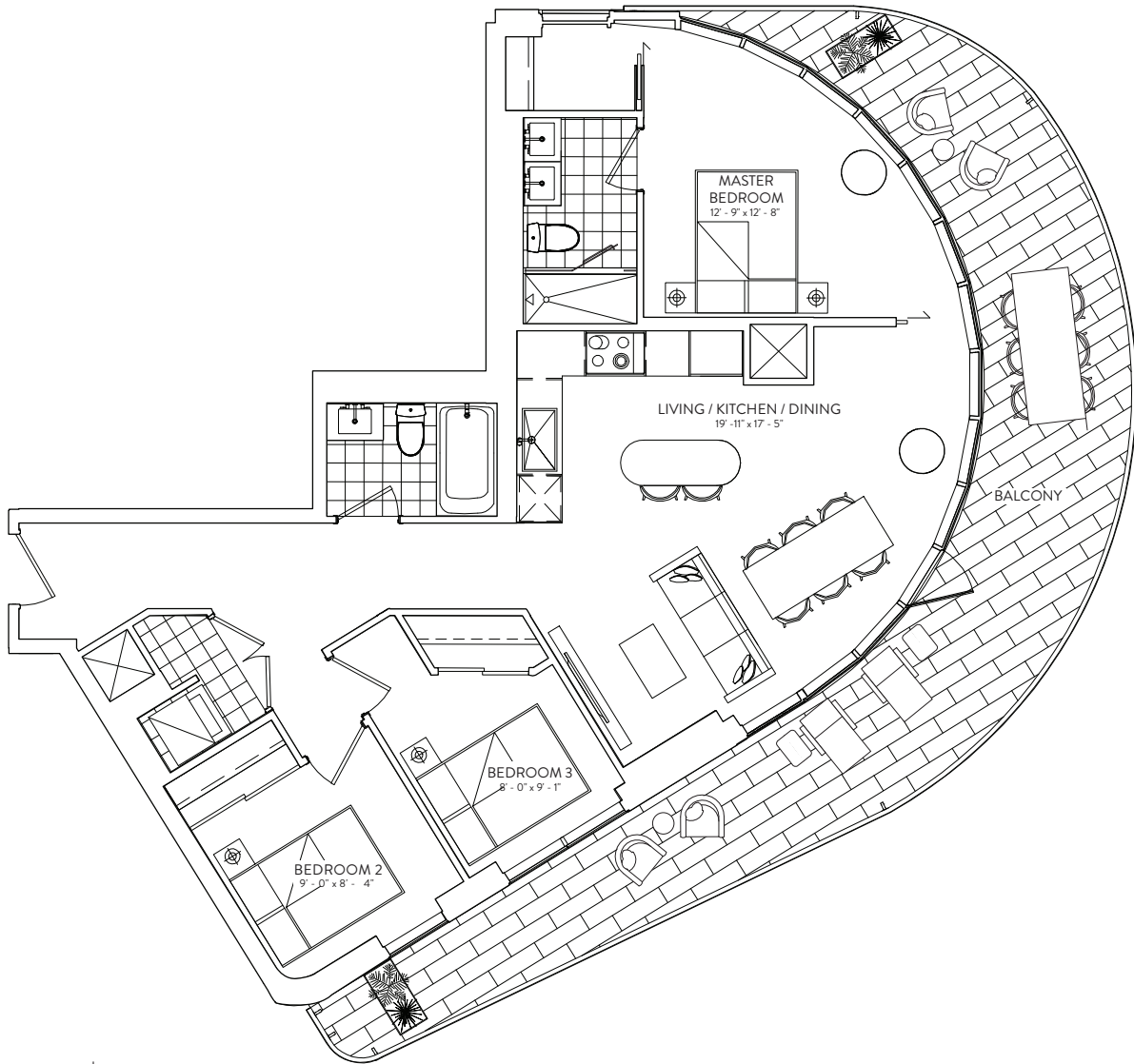
ELADCANADA

3B 994

3 BEDROOM | 2 BATHROOM

INTERIOR: 994 SF | EXTERIOR: 360 SF

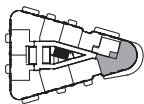
GALLERIA 



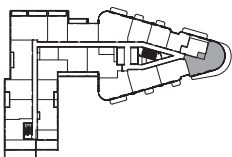
FLOOR 11 | EXTERIOR: 385 SF



FLOORS 11-27



FLOORS 9-10



This plan is not to scale and is subject to architectural review and revision. The number of units per Floor and the number of floors may be reduced or increased at the vendor's sole discretion without notice. The purchaser acknowledges that the actual unit purchased may be a reverse layout to the plan shown. All materials, specifications, details and dimensions, if any, are approximate and subject to change without notice in order to comply with building site conditions and municipal, structural, vendor and/or architectural requirements. Actual living areas may vary from floor area stated. Floor areas have been measured and may vary in accordance with Bulletin #22 published by the Tarion Warranty Corporation. Bulkheads are not shown on this plan and may be located in areas of the Unit as required to provide venting and mechanical systems. Balconies, Terraces and Patios, if any, are exclusive use common elements shown for display purposes only and location and size are subject to change without notice. Window location, size and type may vary without notice. The length, width and directional position of the flooring are for illustration purposes only and may vary without notice. E.&O.E.

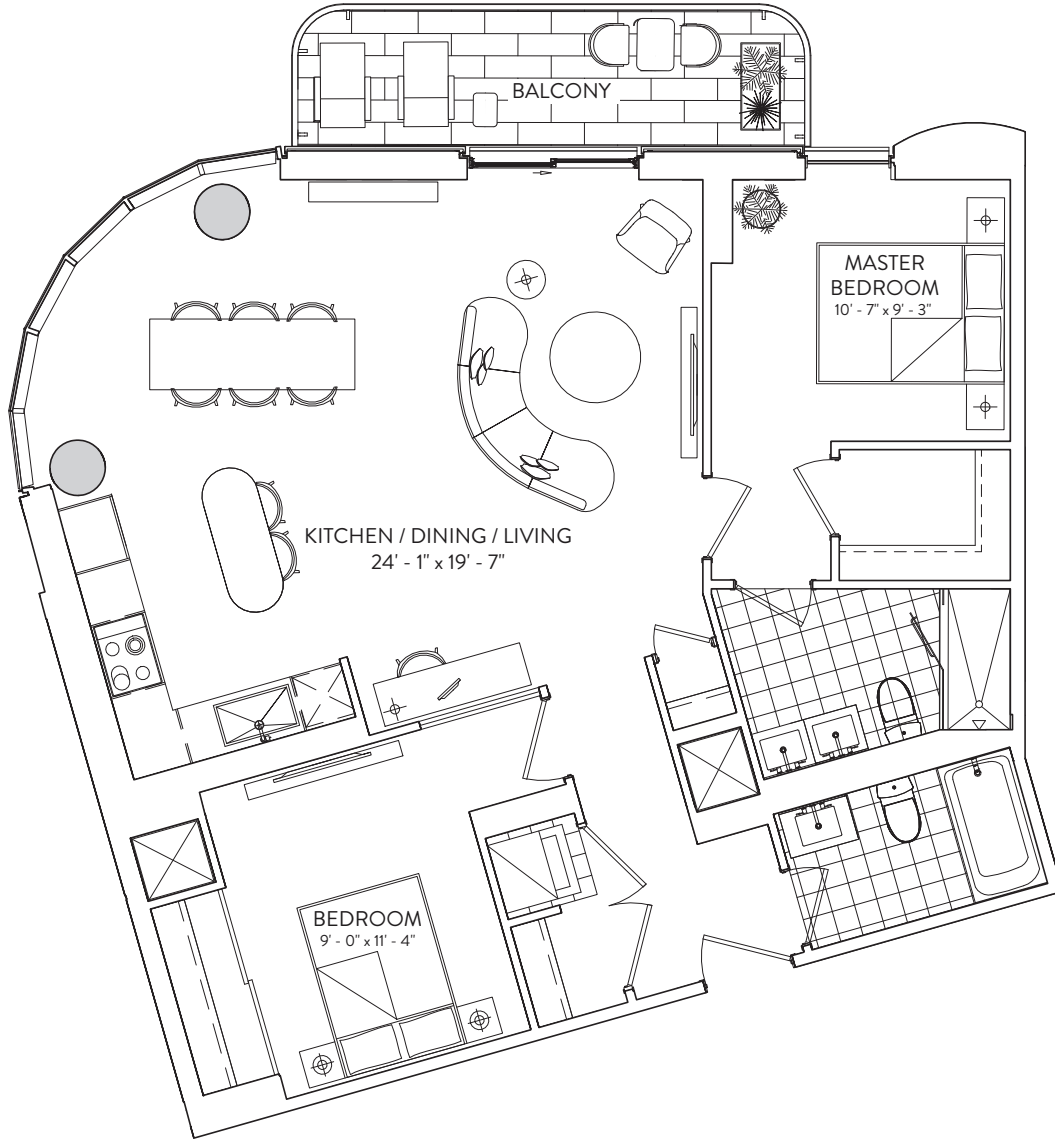
ELADCANADA

2B 1046

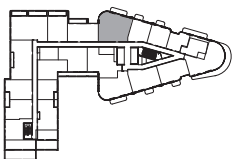
2 BEDROOM | 2 BATHROOM

INTERIOR: 1046 SF | EXTERIOR: 85 SF

GALLERIA 



FLOORS 9-10



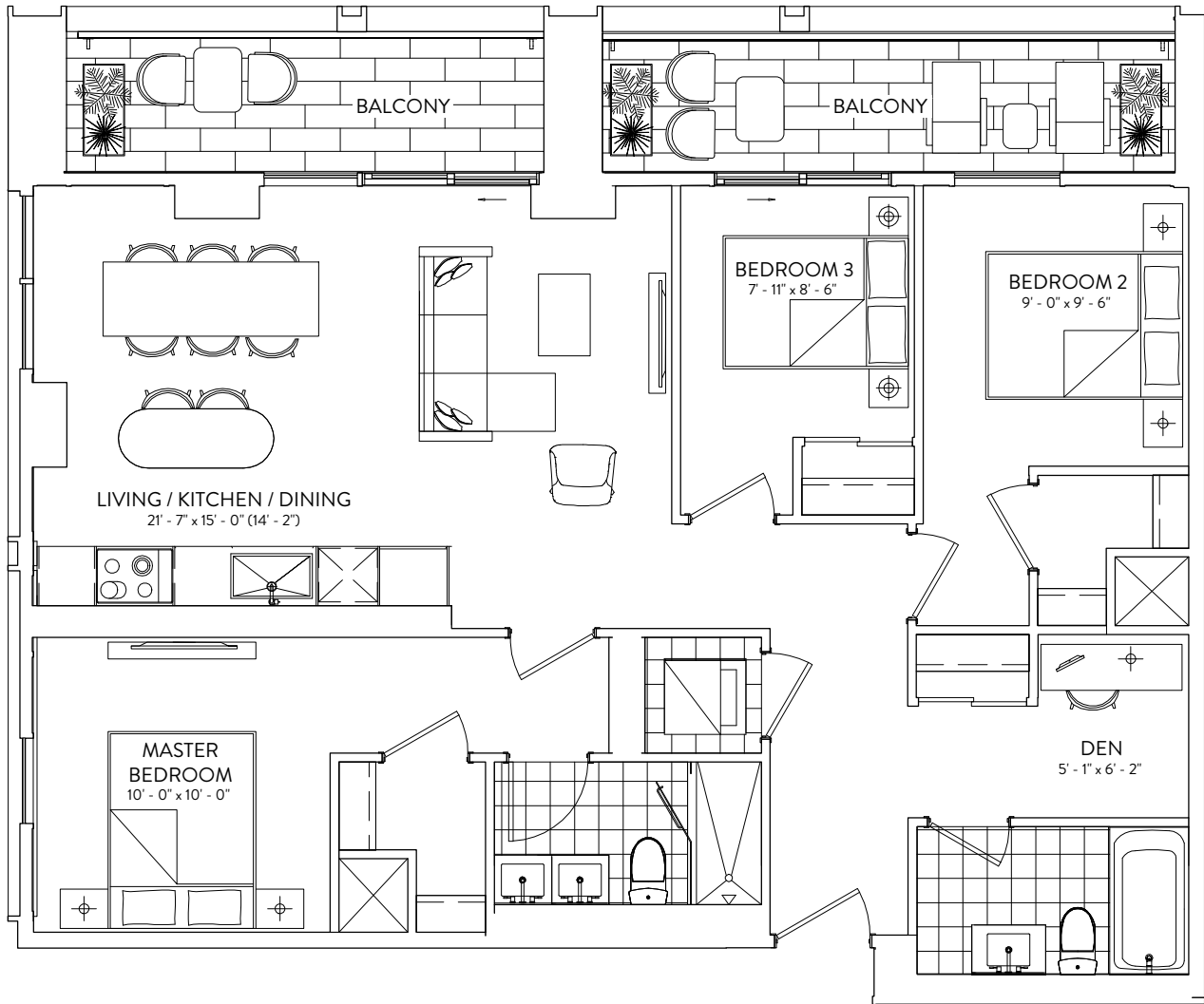
This plan is not to scale and is subject to architectural review and revision. The number of units per Floor and the number of floors may be reduced or increased at the vendor's sole discretion without notice. The purchaser acknowledges that the actual unit purchased may be a reverse layout to the plan shown. All materials, specifications, details and dimensions, if any, are approximate and subject to change without notice in order to comply with building site conditions and municipal, structural, vendor and/or architectural requirements. Actual living areas may vary from floor area stated. Floor areas have been measured and may vary in accordance with Bulletin #22 published by the Tarion Warranty Corporation. Bulkheads are not shown on this plan and may be located in areas of the Unit as required to provide venting and mechanical systems. Balconies, Terraces and Patios, if any, are exclusive use common elements shown for display purposes only and location and size are subject to change without notice. Window location, size and type may vary without notice. The length, width and directional position of the flooring are for illustration purposes only and may vary without notice. E.&O.E.

ELAD CANADA

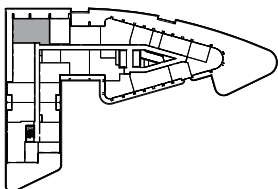
3B+D 1110

3 BEDROOM + DEN | 2 BATHROOM
 INTERIOR: 1110 SF | EXTERIOR: 158 SF

GALLERIA



FLOORS 9-10

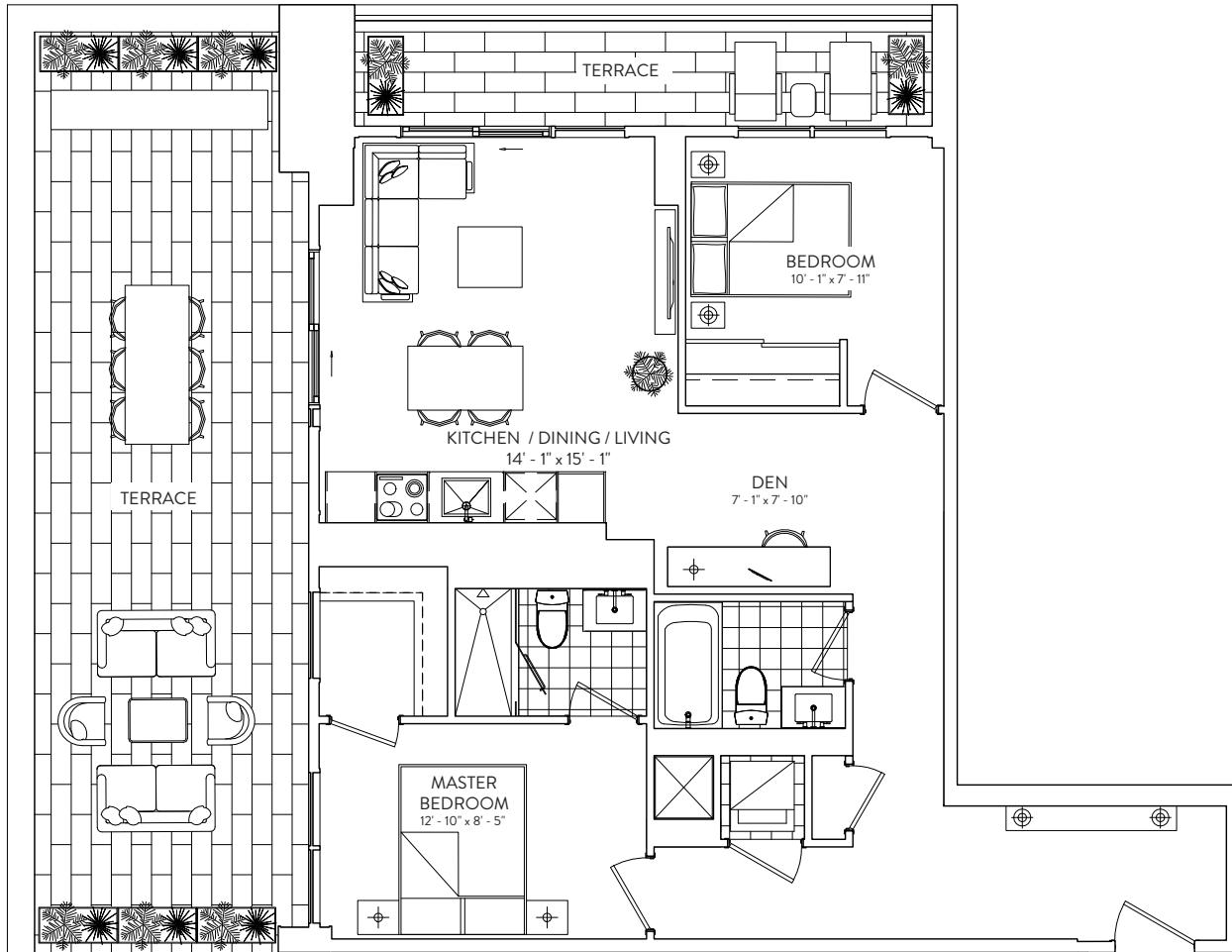


This plan is not to scale and is subject to architectural review and revision. The number of units per Floor and the number of floors may be reduced or increased at the vendor's sole discretion without notice. The purchaser acknowledges that the actual unit purchased may be a reverse layout to the plan shown. All materials, specifications, details and dimensions, if any, are approximate and subject to change without notice in order to comply with building site conditions and municipal, structural, vendor and/or architectural requirements. Actual living areas may vary from floor area stated. Floor areas have been measured and may vary in accordance with Bulletin #22 published by the Tarion Warranty Corporation. Bulkheads are not shown on this plan and may be located in areas of the Unit as required to provide venting and mechanical systems. Balconies, Terraces and Patios, if any, are exclusive use common elements shown for display purposes only and location and size are subject to change without notice. Window location, size and type may vary without notice. The length, width and directional position of the flooring are for illustration purposes only and may vary without notice. E.&O.E.

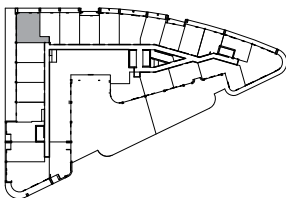
ELADCANADA

2B+D 917

INTERIOR: 917 SF | EXTERIOR: 477 SF 2 BEDROOM + DEN | 2 BATHROOM



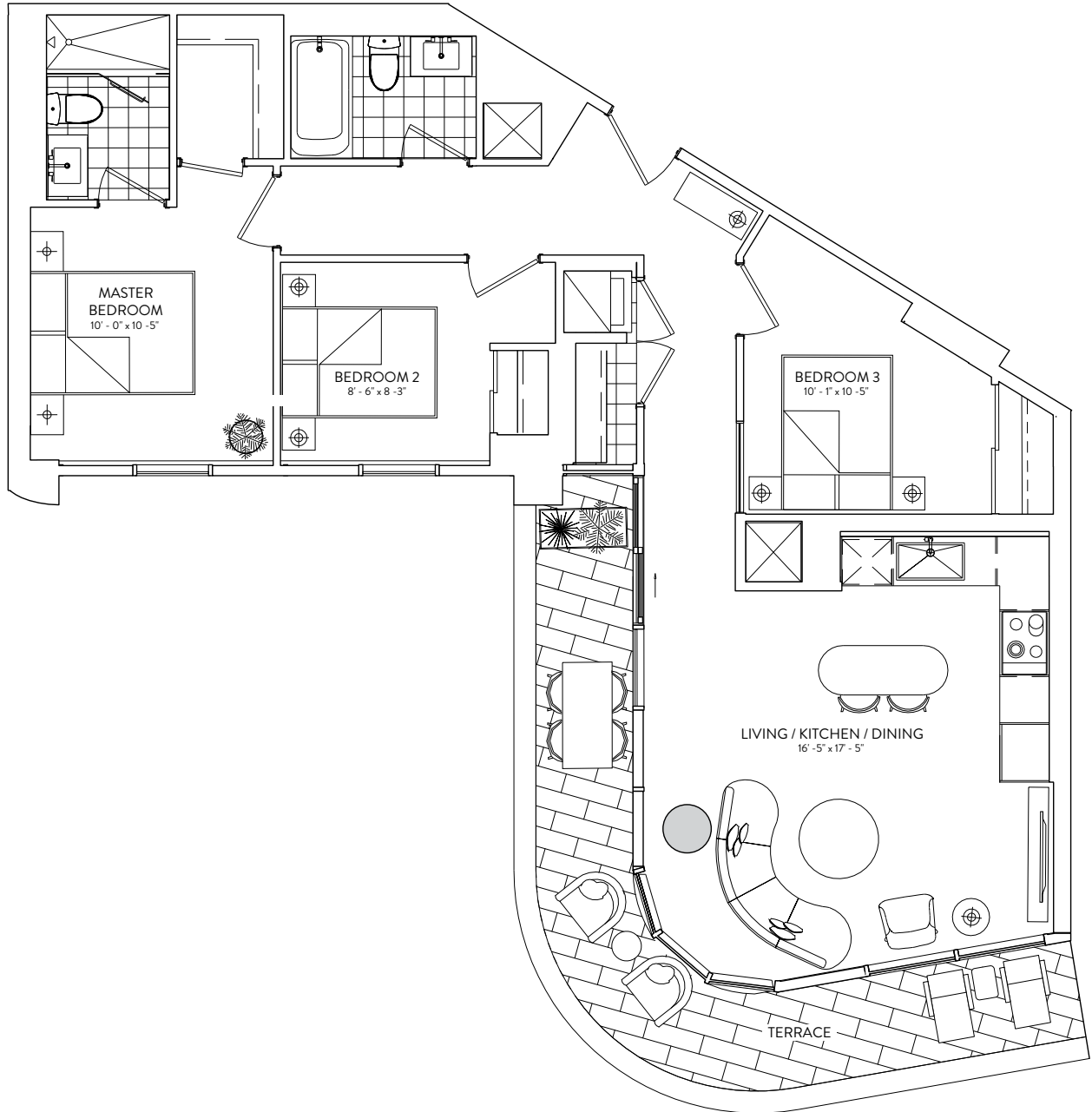
FLOOR 3



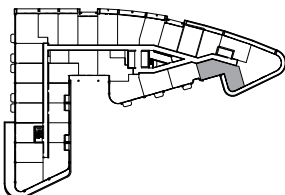
This plan is not to scale and is subject to architectural review and revision. The number of units per level and the number of floors may be reduced or increased at the vendor's sole discretion without notice. The purchaser acknowledges that the actual unit purchased may be a reverse layout to the plan shown. All materials, specifications, details and dimensions, if any, are approximate and subject to change without notice in order to comply with building site conditions and municipal, structural, vendor and/or architectural requirements. Actual living areas may vary from floor area stated. Floor areas have been measured and may vary in accordance with Bulletin #22 published by the Tarion Warranty Corporation. Bulkheads are not shown on this plan and may be located in areas of the Unit as required to provide venting and mechanical systems. Balconies, Terraces and Patios, if any, are exclusive use common elements shown for display purposes only and location and size are subject to change without notice. Window location, size and type may vary without notice. The length, width and directional position of the flooring are for illustration purposes only and may vary without notice. E.&O.E.

3B 973

INTERIOR: 973 SF | EXTERIOR: 156 SF | 3 BEDROOM | 2 BATHROOM



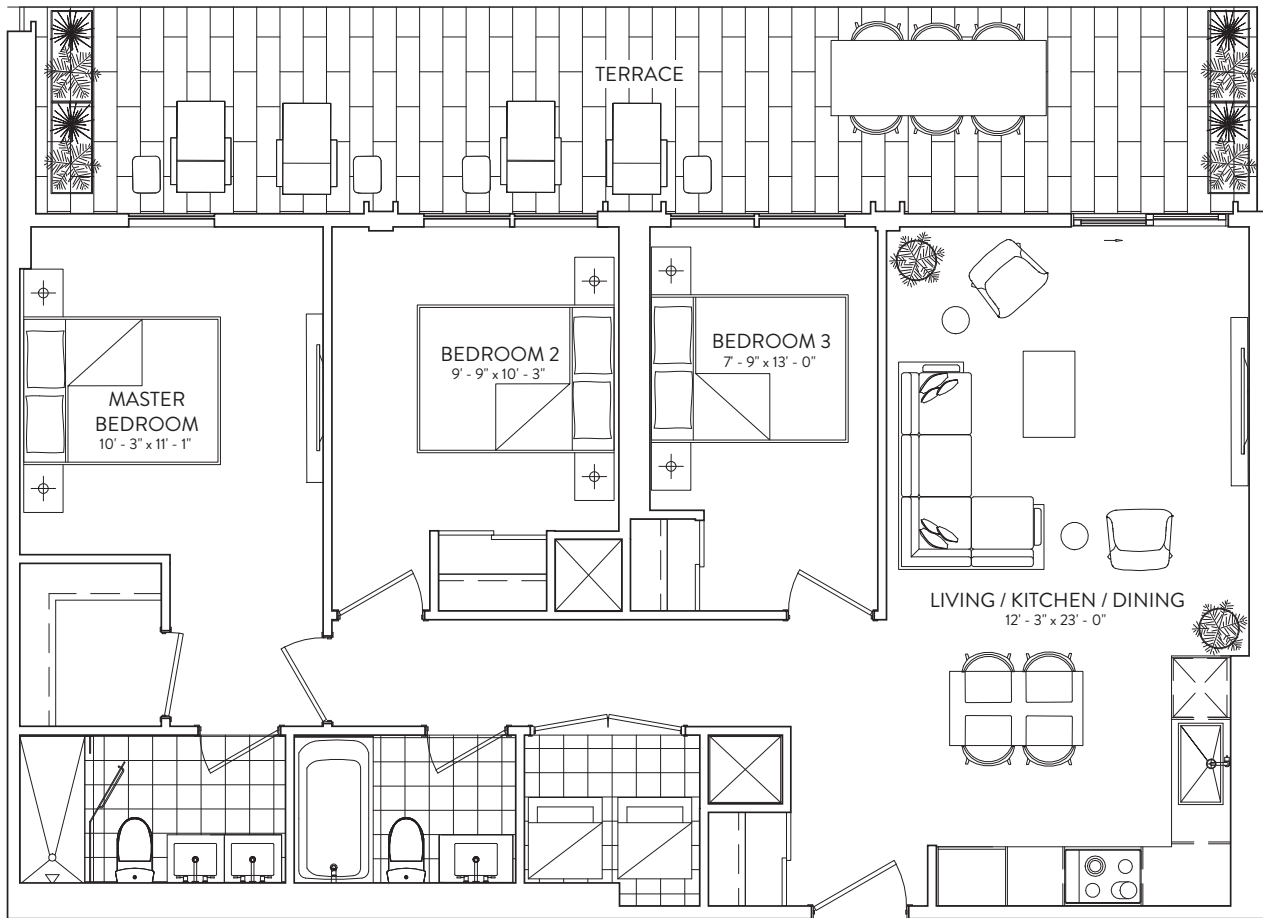
FLOORS 3-7



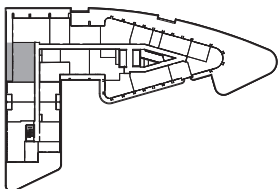
This plan is not to scale and is subject to architectural review and revision. The number of units per level and the number of floors may be reduced or increased at the vendor's sole discretion without notice. The purchaser acknowledges that the actual unit purchased may be a reverse layout to the plan shown. All materials, specifications, details and dimensions, if any, are approximate and subject to change without notice in order to comply with building site conditions and municipal, structural, vendor and/or architectural requirements. Actual living areas may vary from floor area stated. Floor areas have been measured and may vary in accordance with Bulletin #22 published by the Tarion Warranty Corporation. Bulkheads are not shown on this plan and may be located in areas of the Unit as required to provide venting and mechanical systems. Balconies, Terraces and Patios, if any, are exclusive use common elements shown for display purposes only and location and size are subject to change without notice. Window location, size and type may vary without notice. The length, width and directional position of the flooring are for illustration purposes only and may vary without notice. E.&O.E.

3B 1018 W

INTERIOR: 1018 SF | EXTERIOR: 269 SF | 3 BEDROOM | 2 BATHROOM



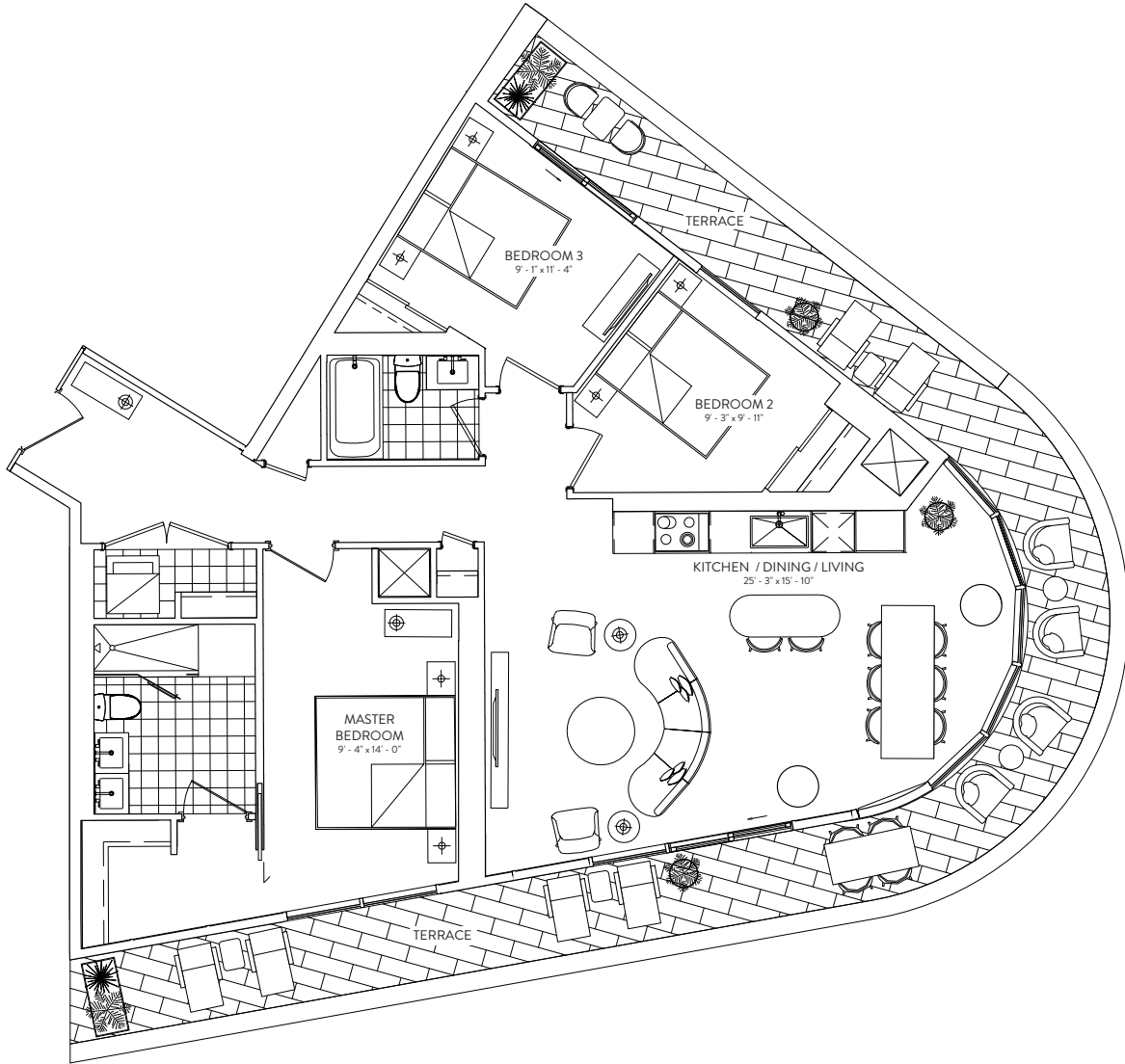
FLOOR 8



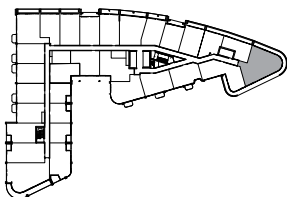
This plan is not to scale and is subject to architectural review and revision. The number of units per level and the number of floors may be reduced or increased at the vendor's sole discretion without notice. The purchaser acknowledges that the actual unit purchased may be a reverse layout to the plan shown. All materials, specifications, details and dimensions, if any, are approximate and subject to change without notice in order to comply with building site conditions and municipal, structural, vendor and/or architectural requirements. Actual living areas may vary from floor area stated. Floor areas have been measured and may vary in accordance with Bulletin #22 published by the Tarion Warranty Corporation. Bulkheads are not shown on this plan and may be located in areas of the Unit as required to provide venting and mechanical systems. Balconies, Terraces and Patios, if any, are exclusive use common elements shown for display purposes only and location and size are subject to change without notice. Window location, size and type may vary without notice. The length, width and directional position of the flooring are for illustration purposes only and may vary without notice. E.&O.E.

3B 1225

INTERIOR: 1225 SF | EXTERIOR: 360 SF | 3 BEDROOM | 2 BATHROOM

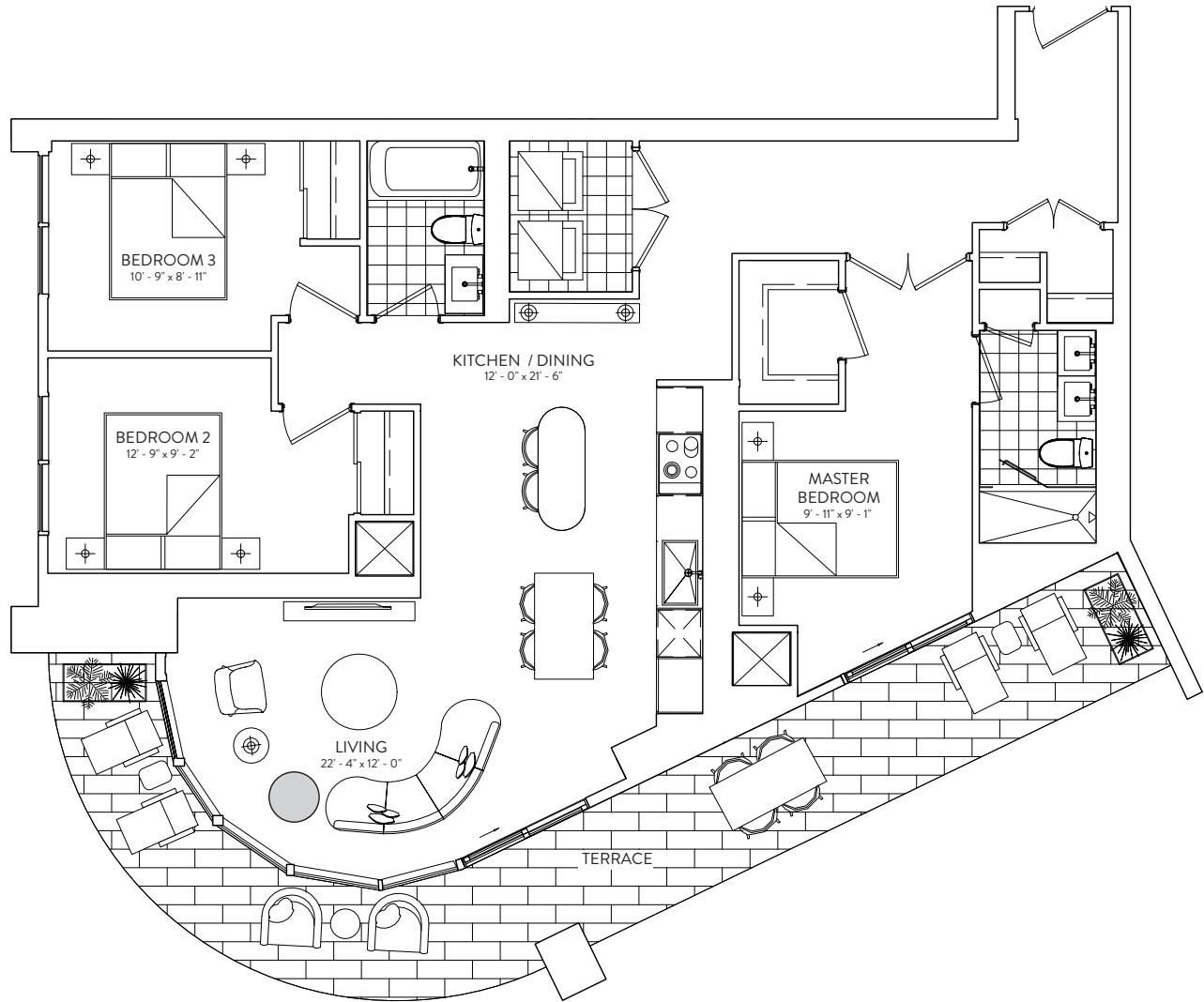


FLOOR 4

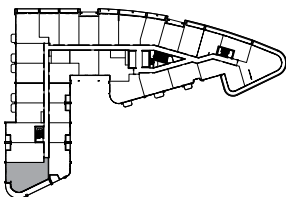


3B 1250 S

INTERIOR: 1250 SF | EXTERIOR: 270 SF | 3 BEDROOM | 2 BATHROOM



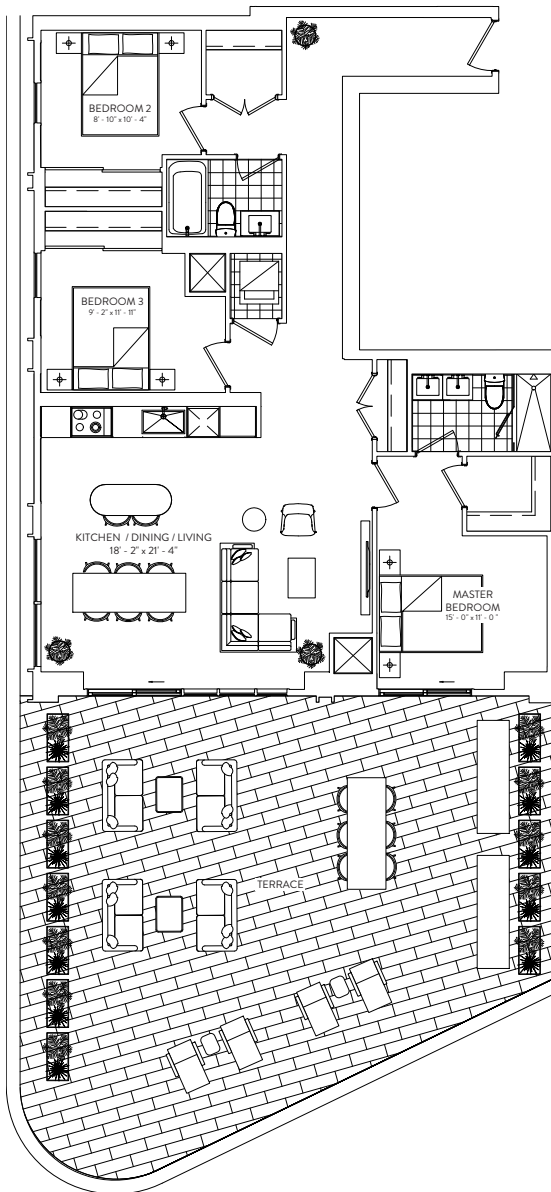
FLOORS 3-4



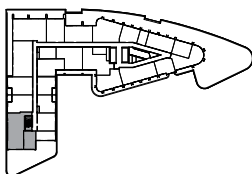
This plan is not to scale and is subject to architectural review and revision. The number of units per level and the number of floors may be reduced or increased at the vendor's sole discretion without notice. The purchaser acknowledges that the actual unit purchased may be a reverse layout to the plan shown. All materials, specifications, details and dimensions, if any, are approximate and subject to change without notice in order to comply with building site conditions and municipal, structural, vendor and/or architectural requirements. Actual living areas may vary from floor area stated. Floor areas have been measured and may vary in accordance with Bulletin #22 published by the Tarion Warranty Corporation. Bulkheads are not shown on this plan and may be located in areas of the Unit as required to provide venting and mechanical systems. Balconies, Terraces and Patios, if any, are exclusive use common elements shown for display purposes only and location and size are subject to change without notice. Window location, size and type may vary without notice. The length, width and directional position of the flooring are for illustration purposes only and may vary without notice. E.&O.E.

3B 1250 W

INTERIOR: 1250 SF | EXTERIOR: 872 SF | 3 BEDROOM | 2 BATHROOM



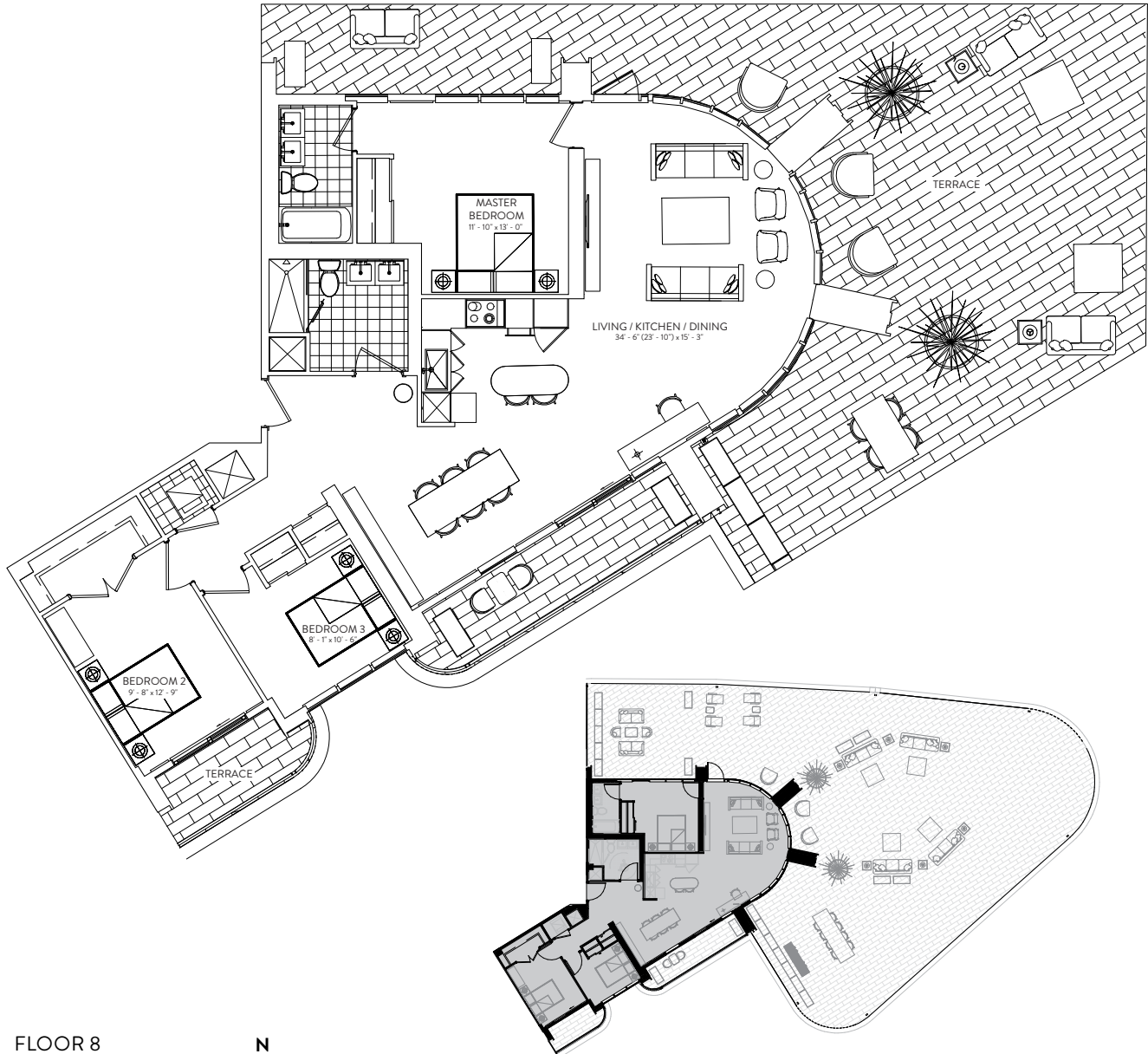
FLOORS 8



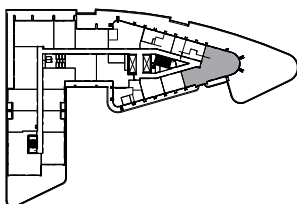
This plan is not to scale and is subject to architectural review and revision. The number of units per level and the number of floors may be reduced or increased at the vendor's sole discretion without notice. The purchaser acknowledges that the actual unit purchased may be a reverse layout to the plan shown. All materials, specifications, details and dimensions, if any, are approximate and subject to change without notice in order to comply with building site conditions and municipal, structural, vendor and/or architectural requirements. Actual living areas may vary from floor area stated. Floor areas have been measured and may vary in accordance with Bulletin #22 published by the Tarion Warranty Corporation. Bulkheads are not shown on this plan and may be located in areas of the Unit as required to provide venting and mechanical systems. Balconies, Terraces and Patios, if any, are exclusive use common elements shown for display purposes only and location and size are subject to change without notice. Window location, size and type may vary without notice. The length, width and directional position of the flooring are for illustration purposes only and may vary without notice. E.&O.E.

3B 1426-E

INTERIOR: 1,426 SF | EXTERIOR: 3,298 SF 3 BEDROOM | 2 BATHROOM



FLOOR 8



This plan is not to scale and is subject to architectural review and revision. The number of units per Floor and the number of floors may be reduced or increased at the vendor's sole discretion without notice. The purchaser acknowledges that the actual unit purchased may be a reverse layout to the plan shown. All materials, specifications, details and dimensions, if any, are approximate and subject to change without notice in order to comply with building site conditions and municipal, structural, vendor and/or architectural requirements. Actual living areas may vary from floor area stated. Floor areas have been measured and may vary in accordance with Bulletin #22 published by the Tarion Warranty Corporation. Bulkheads are not shown on this plan and may be located in areas of the Unit as required to provide venting and mechanical systems. Balconies, Terraces and Patios, if any, are exclusive use common elements shown for display purposes only and location and size are subject to change without notice. Window location, size and type may vary without notice. The length, width and directional position of the flooring are for illustration purposes only and may vary without notice. E.&O.E.