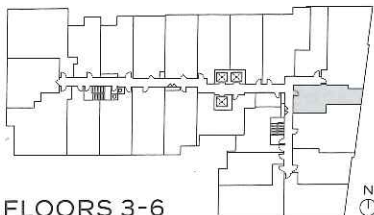
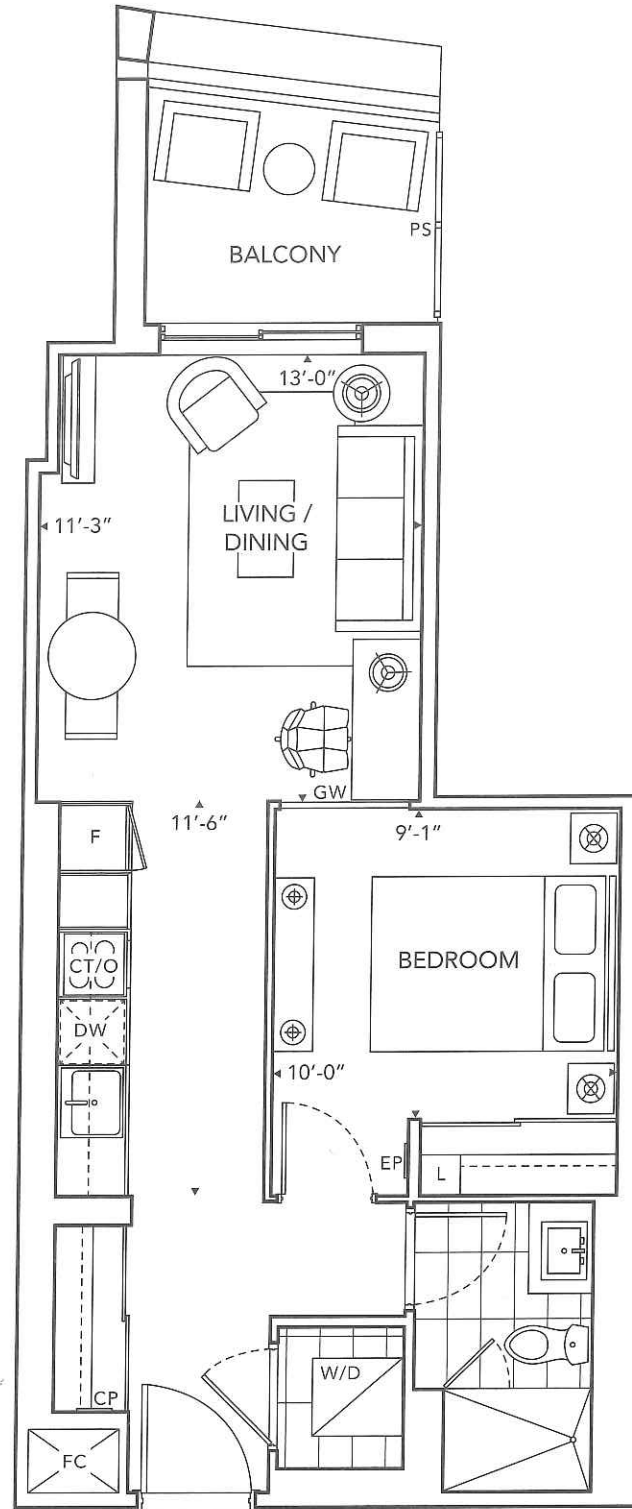


FLOORPLANS

1E

532 SQ.FT.
1 BEDROOM
1 BATH

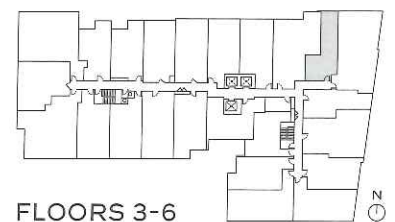
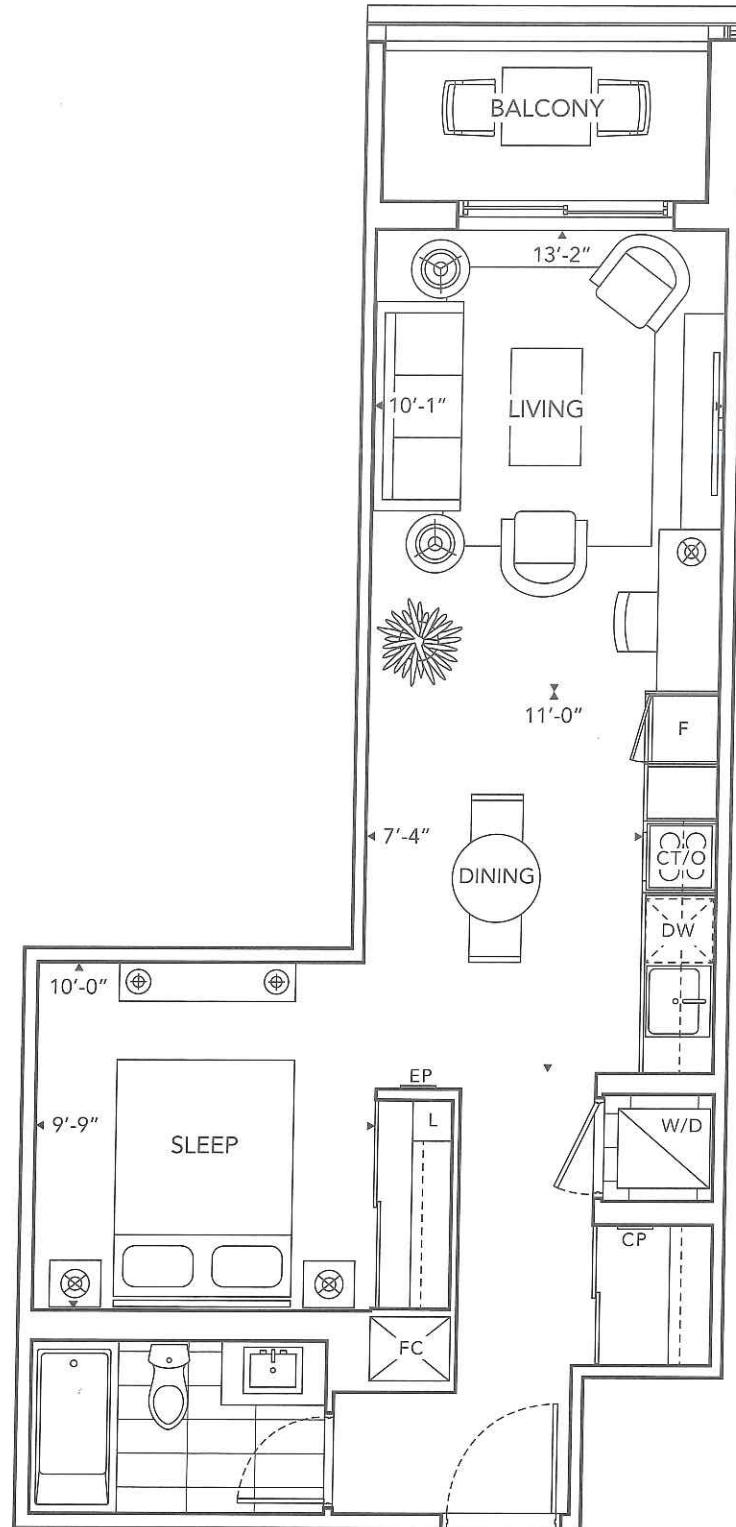


FLOORS 3-6

©Tridel 2023. "D" design, Tridel Built for Life, Tridel Built for Life Design, and Tridel Built Green Built for Life are registered Trademarks of Tridel Corporation. Project names and logos are Trademarks of their respective owners. All rights reserved. Building and view not to scale. All dimensions are approximate and subject to normal construction variances. Dimensions may exceed the usable floor area. Sizes and specifications subject to change without notice. Actual usable floor space may vary from the stated floor area. Furniture is displayed for illustration purposes only and does not necessarily reflect the electrical plan for the suite. Suites are sold unfurnished. Balcony and façade variations may apply, contact a sales representative for further details. Furniture, BBQs and planter locations on terraces are for illustration purposes only and subject to change. Illustrations are artist's concept only. Specifications subject to change without notice. E. & O.E. September 2023.

S1

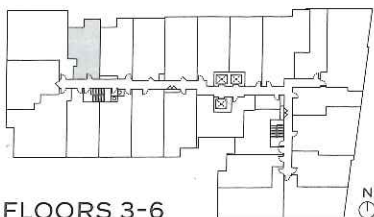
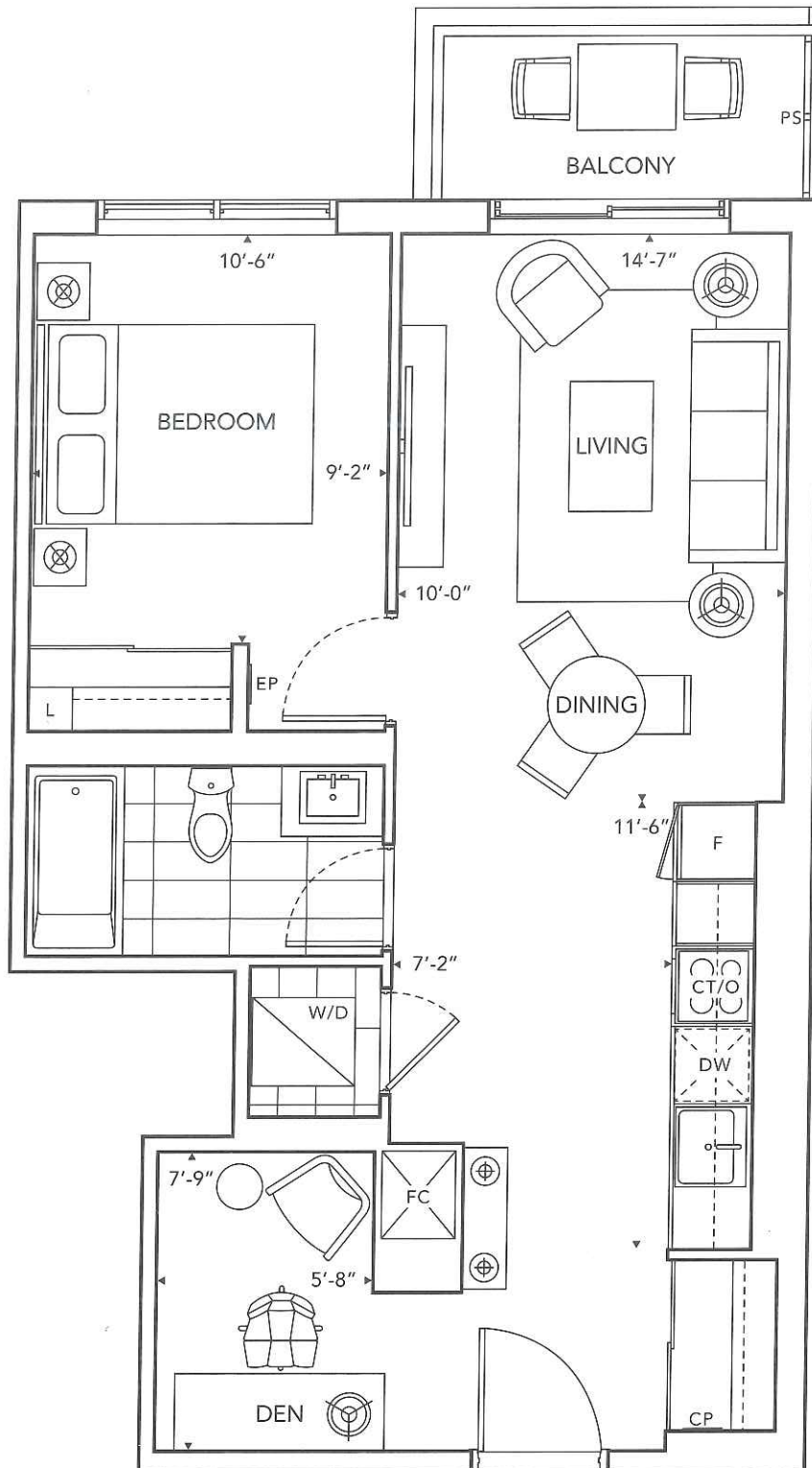
551 SQ.FT.
JR. 1 BEDROOM
1 BATH



FLOORS 3-6

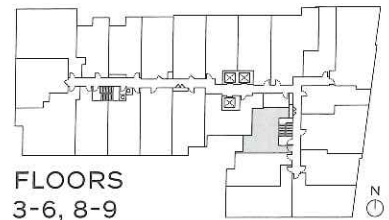
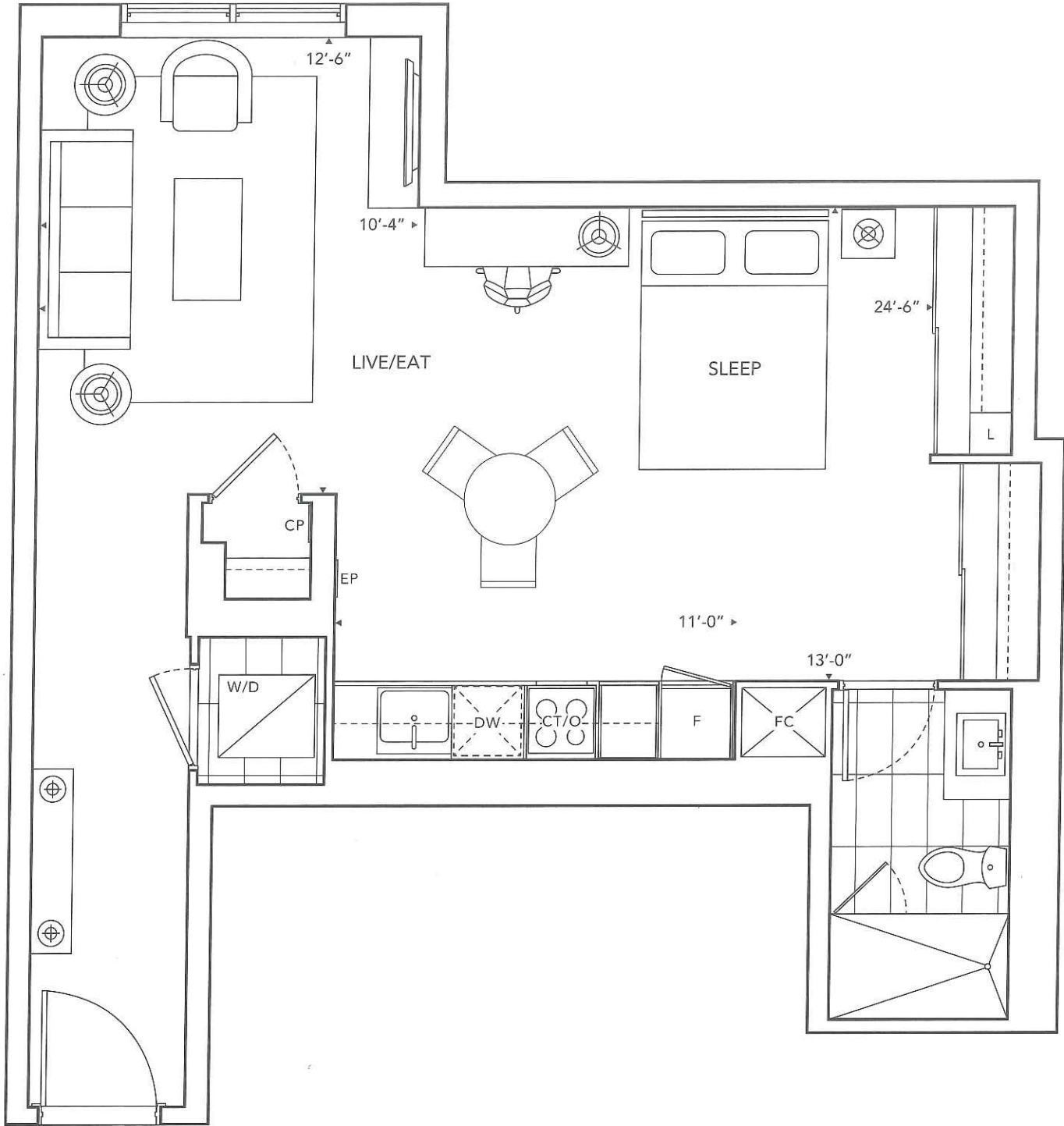
1X+D

603 SQ.FT.
1 BEDROOM + DEN
1 BATH



FLOORS 3-6

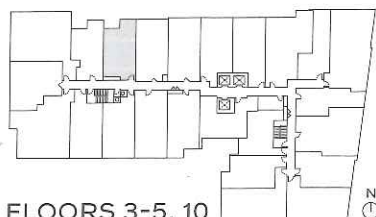
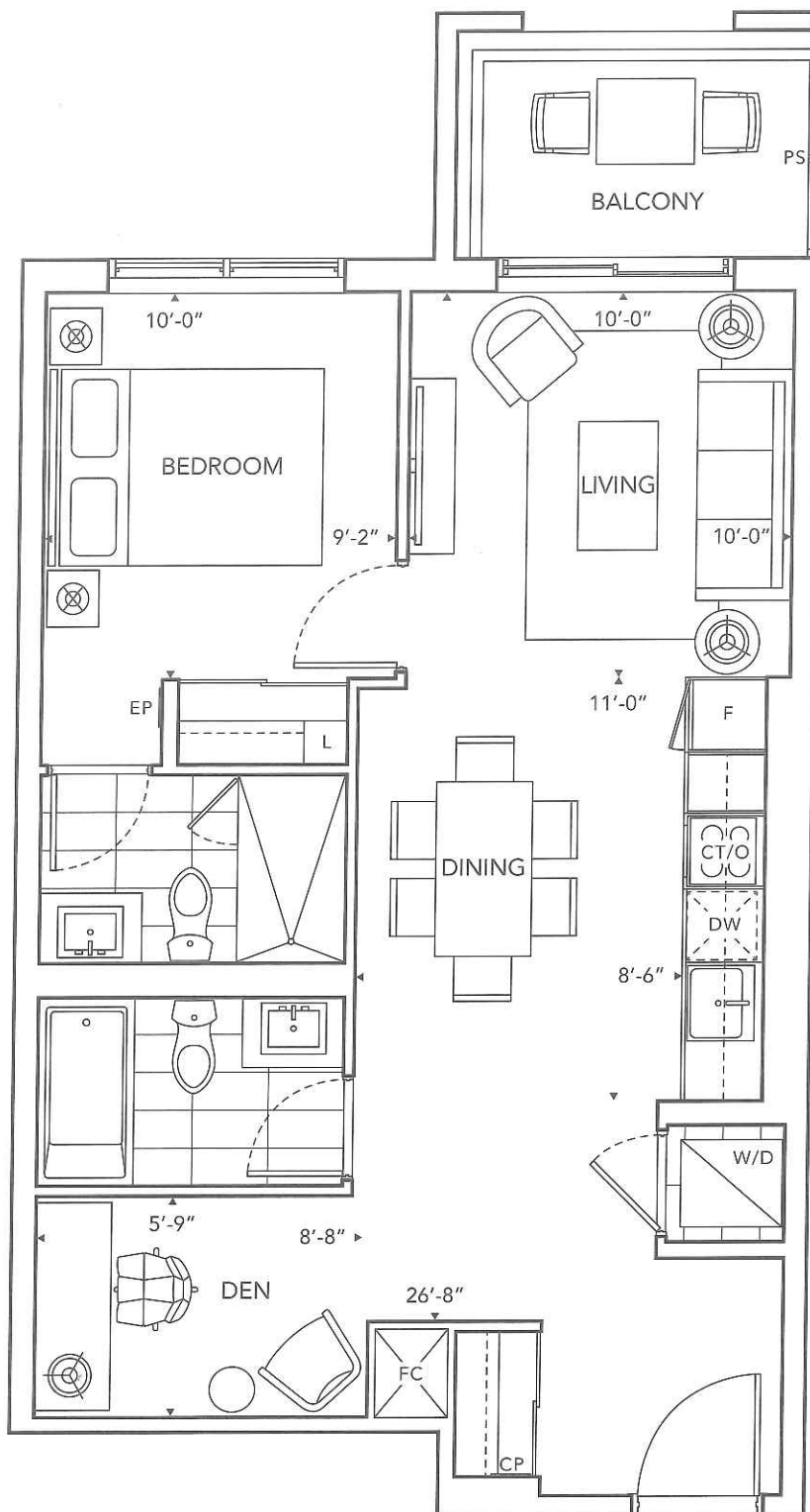
©Tridel 2023. ®Tridel, "D" design, Tridel Built for Life, Tridel Built for Life Design, and Tridel Built Green Built for Life are registered Trademarks of Tridel Corporation. Project names and logos are Trademarks of their respective owners. All rights reserved. Building and view not to scale. All dimensions are approximate and subject to normal construction variances. Dimensions may exceed the usable floor area. Sizes and specifications subject to change without notice. Actual usable floor space may vary from the stated floor area. Furniture is displayed for illustration purposes only and does not necessarily reflect the electrical plan for the suite. Suites are sold unfurnished. Balcony and façade variations may apply, contact a sales representative for further details. Furniture, BBQs and planter locations on terraces are for illustration purposes only and subject to change. Illustrations are artist's concept only. Specifications subject to change without notice. E. & O.E. September 2023.



FLOORS
3-6, 8-9

1W+D

635 SQ.FT.
1 BEDROOM + DEN
2 BATH

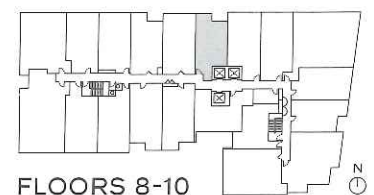
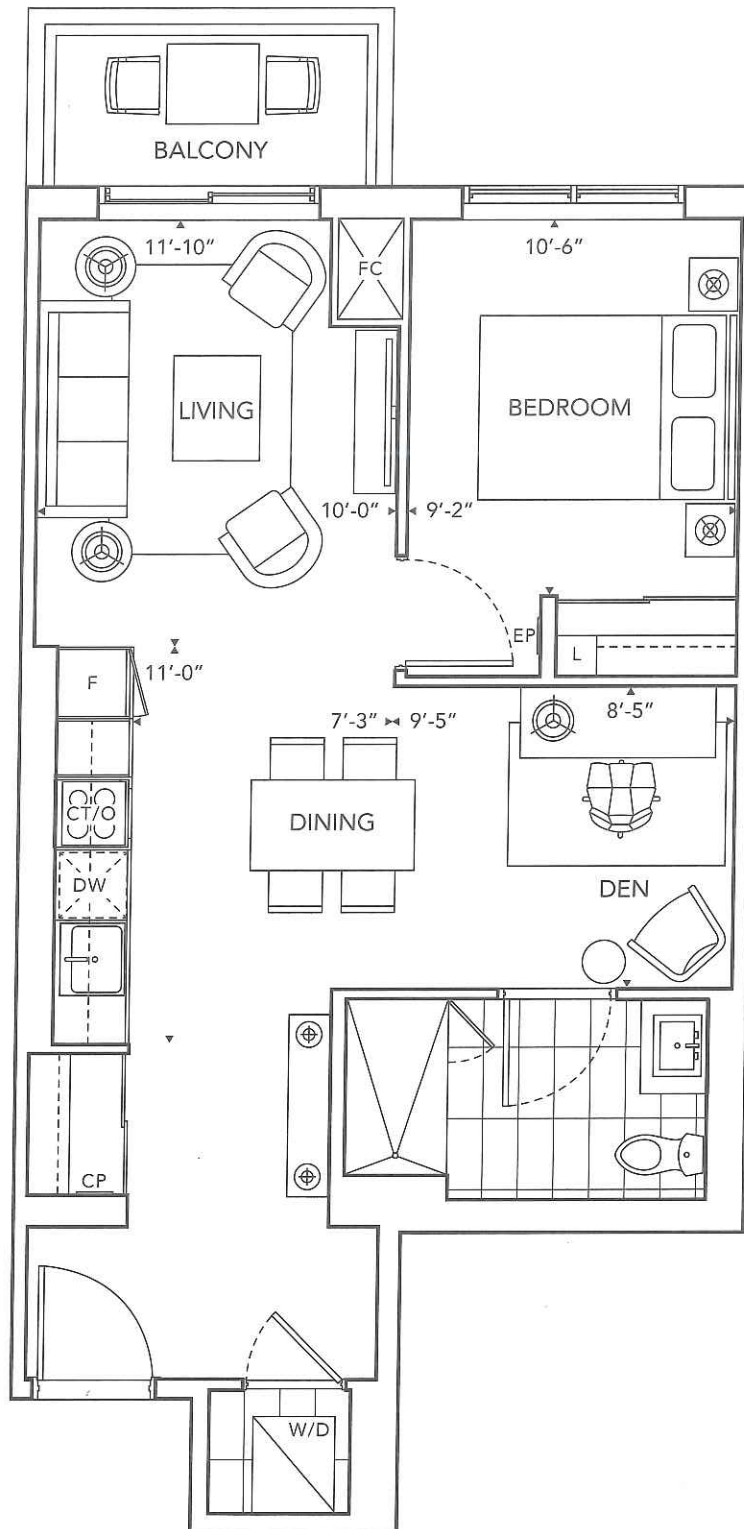


FLOORS 3-5, 10

©Tridel 2023. "D" design, Tridel Built for Life, Tridel Built for Life Design, and Tridel Built Green Built for Life are registered Trademarks of Tridel Corporation. Project names and logos are Trademarks of their respective owners. All rights reserved. Building and view not to scale. All dimensions are approximate and subject to normal construction variances. Dimensions may exceed the usable floor area. Sizes and specifications subject to change without notice. Actual usable floor space may vary from the stated floor area. Furniture is displayed for illustration purposes only and does not necessarily reflect the electrical plan for the suite. Suites are sold unfurnished. Balcony and façade variations may apply, contact a sales representative for further details. Furniture, BBQs and planter locations on terraces are for illustration purposes only and subject to change. Illustrations are artist's concept only. Specifications subject to change without notice. E. & O.E. September 2023.

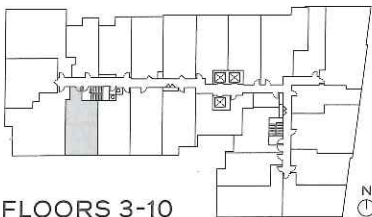
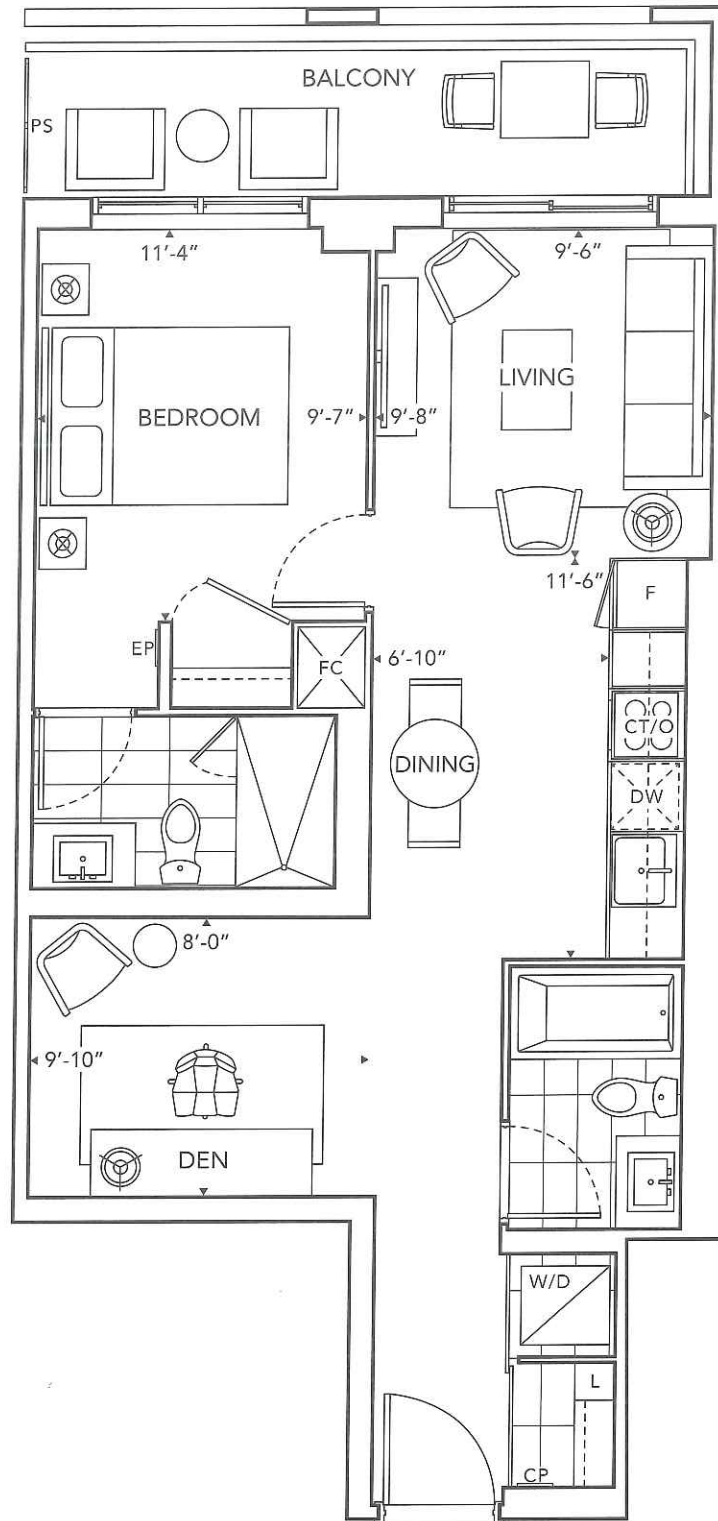
1BB+D

656 SQ.FT.
1 BEDROOM + DEN
1 BATH



1CC+D

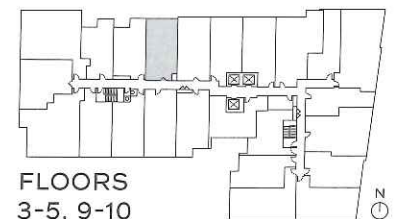
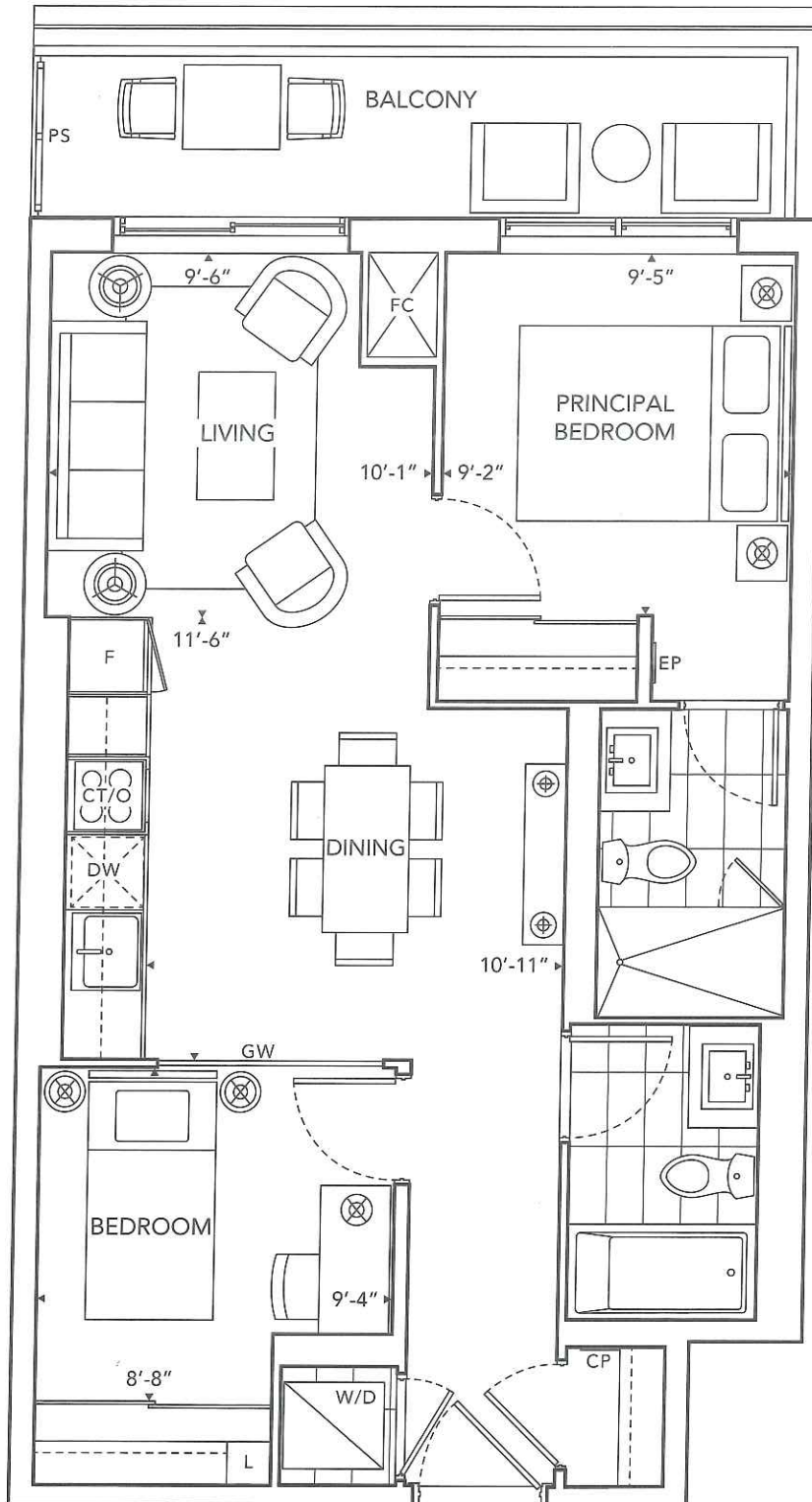
661 SQ.FT.
1 BEDROOM + DEN
2 BATH



©Tridel 2023. ®Tridel, "D" design, Tridel Built for Life, Tridel Built for Life Design, and Tridel Built Green Built for Life are registered Trademarks of Tridel Corporation. Project names and logos are Trademarks of their respective owners. All rights reserved. Building and view not to scale. All dimensions are approximate and subject to normal construction variances. Dimensions may exceed the usable floor area. Sizes and specifications subject to change without notice. Actual usable floor space may vary from the stated floor area. Furniture is displayed for illustration purposes only and does not necessarily reflect the electrical plan for the suite. Suites are sold unfurnished. Balcony and façade variations may apply, contact a sales representative for further details. Furniture, BBQs and planter locations on terraces are for illustration purposes only and subject to change. Illustrations are artist's concept only. Specifications subject to change without notice. E. & O.E. September 2023.

2A-1

665 SQ.FT.
2 BEDROOM
2 BATH

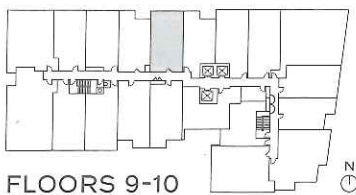
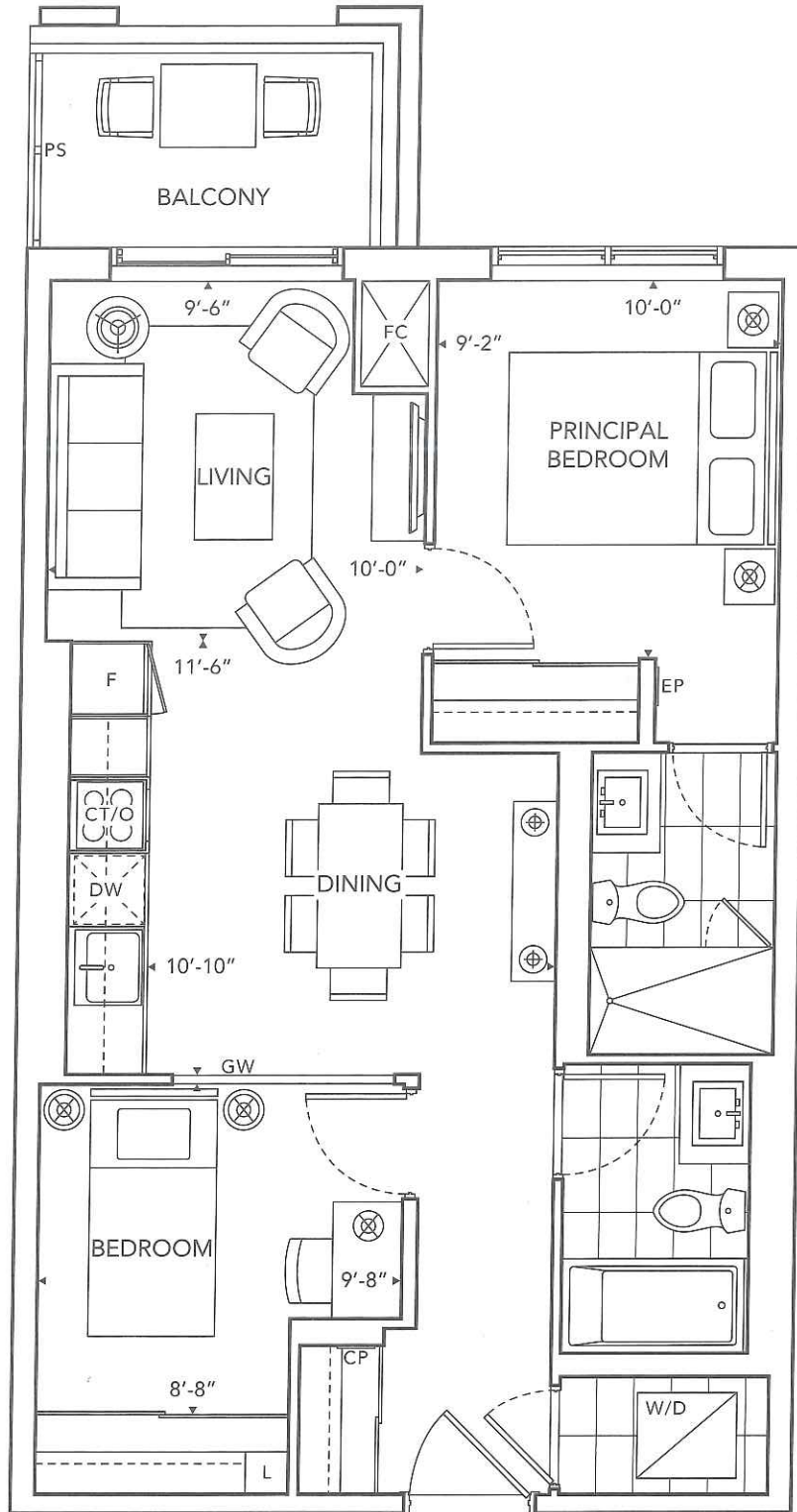


2B-1

676 SQ.FT.

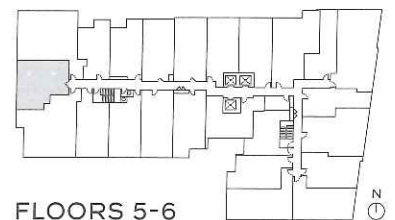
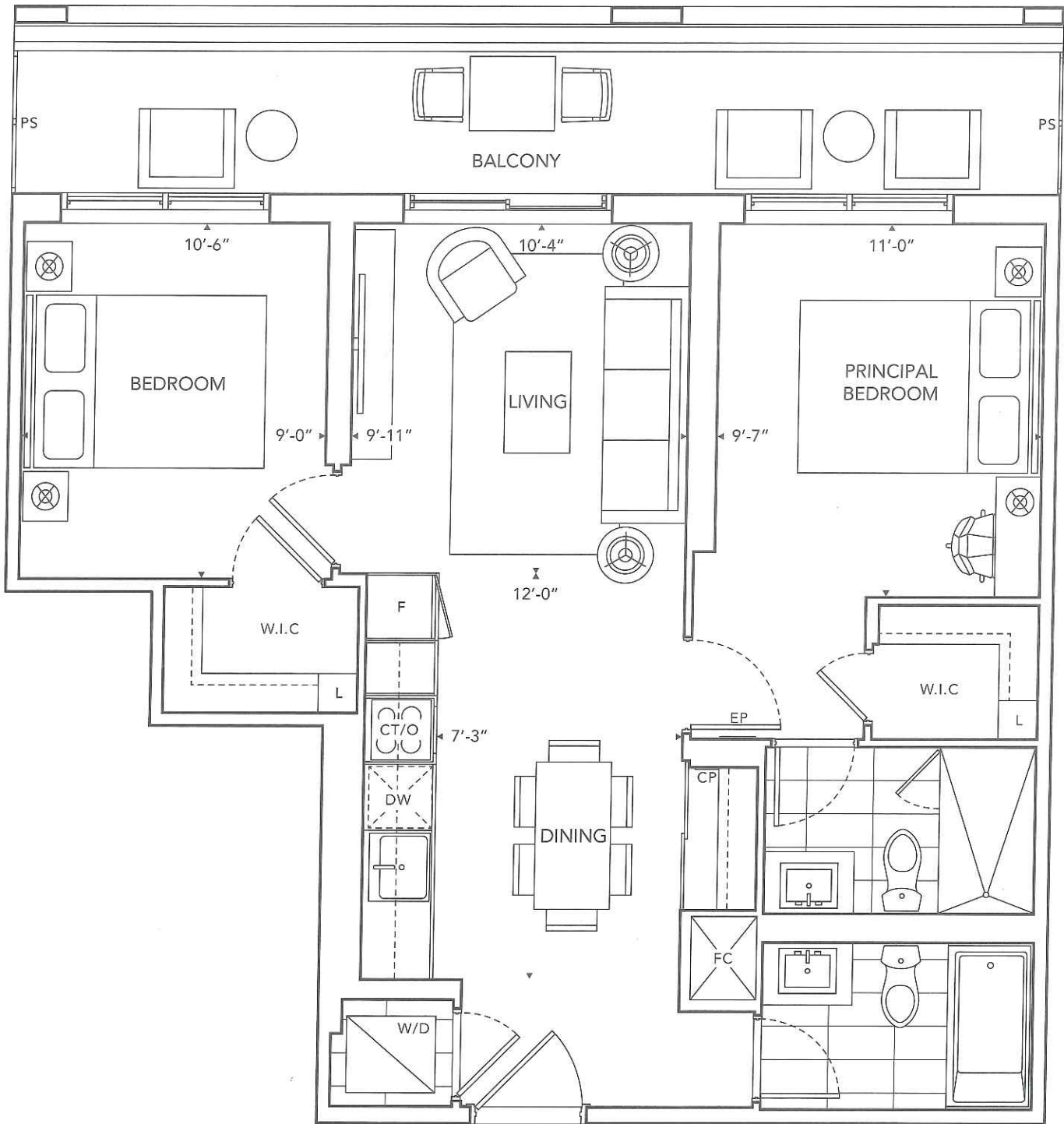
2 BEDROOM

2 BATH



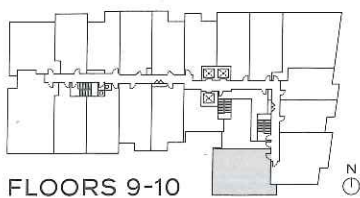
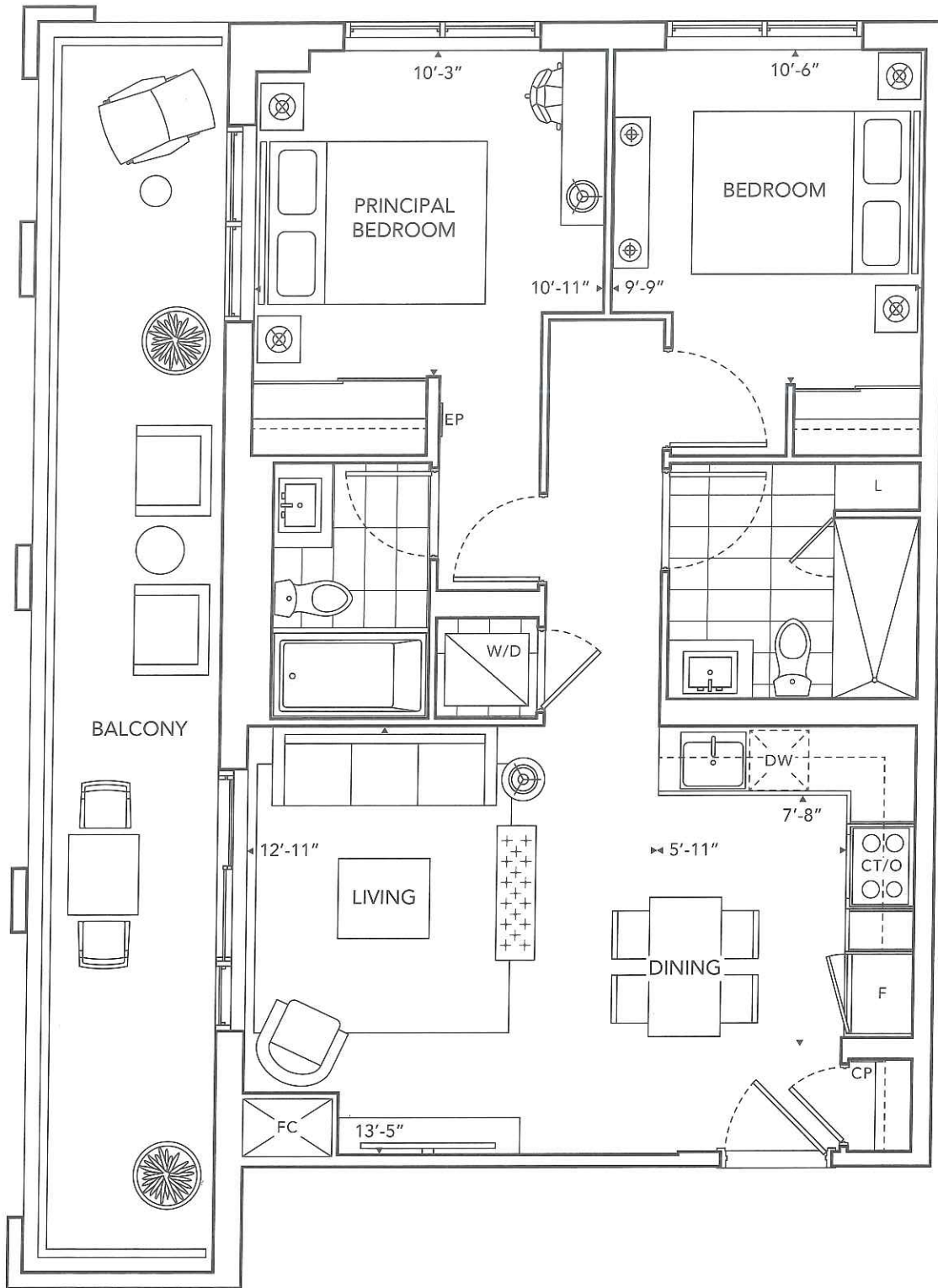
FLOORS 9-10

©Tridel 2023. ®Tridel, "D" design, Tridel Built for Life, Tridel Built for Life Design, and Tridel Built Green Built for Life are registered Trademarks of Tridel Corporation. Project names and logos are Trademarks of their respective owners. All rights reserved. Building and view not to scale. All dimensions are approximate and subject to normal construction variances. Dimensions may exceed the usable floor area. Sizes and specifications subject to change without notice. Actual usable floor space may vary from the stated floor area. Furniture is displayed for illustration purposes only and does not necessarily reflect the electrical plan for the suite. Suites are sold unfurnished. Balcony and façade variations may apply, contact a sales representative for further details. Furniture, BBQs and planter locations on terraces are for illustration purposes only and subject to change. Illustrations are artist's concept only. Specifications subject to change without notice. E. & O.E. September 2023.



2L

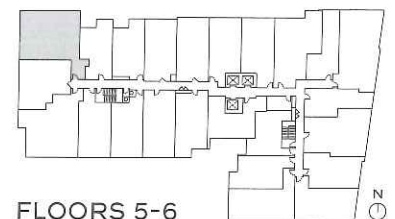
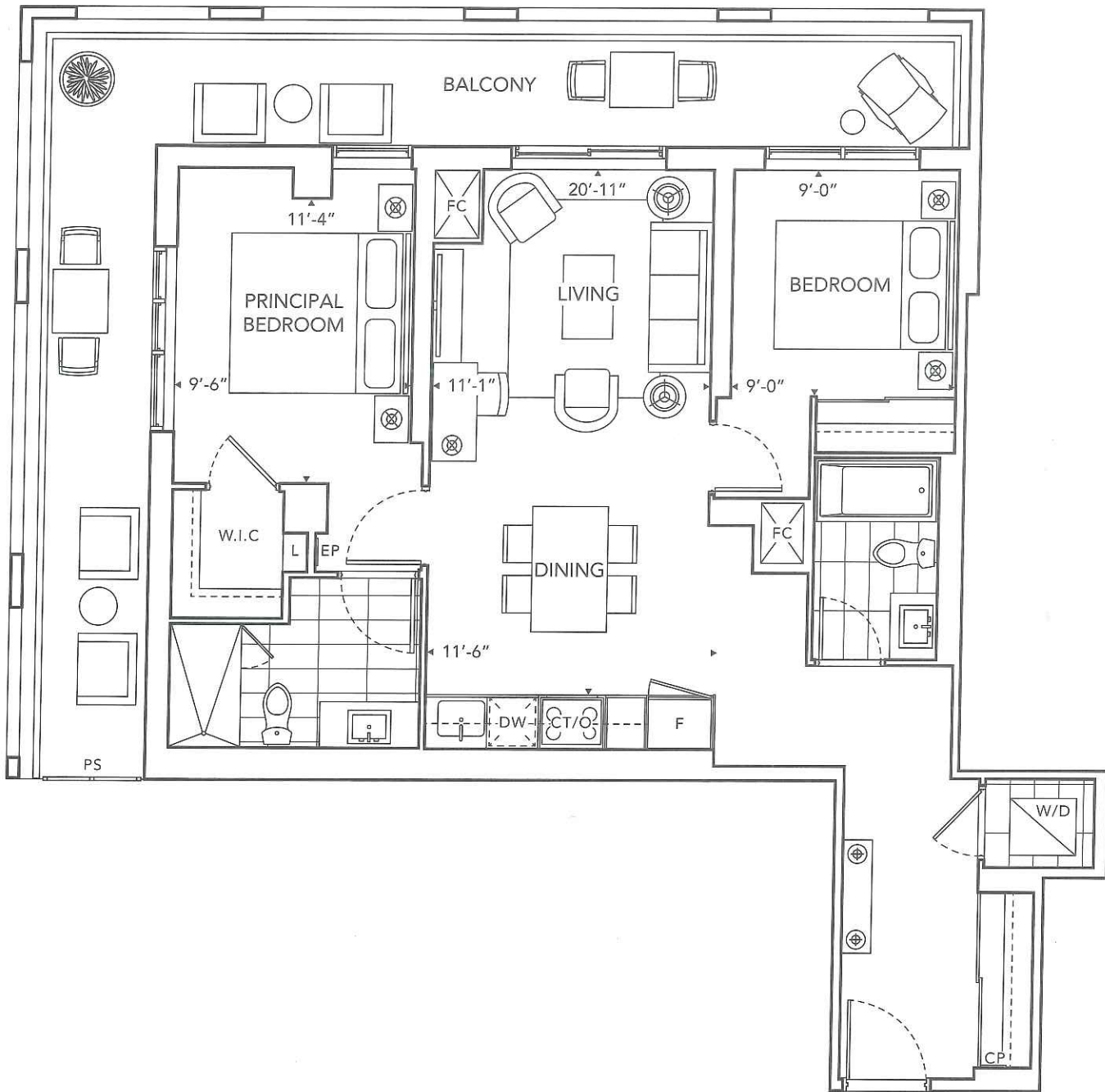
803 SQ.FT.
2 BEDROOM
2 BATH



©Tridel 2023. ®Tridel, "D" design, Tridel Built for Life, Tridel Built for Life Design, and Tridel Built Green Built for Life are registered Trademarks of Tridel Corporation. Project names and logos are Trademarks of their respective owners. All rights reserved. Building and view not to scale. All dimensions are approximate and subject to normal construction variances. Dimensions may exceed the usable floor area. Sizes and specifications subject to change without notice. Actual usable floor space may vary from the stated floor area. Furniture is displayed for illustration purposes only and does not necessarily reflect the electrical plan for the suite. Suites are sold unfurnished. Balcony and façade variations may apply, contact a sales representative for further details. Furniture, BBQs and planter locations on terraces are for illustration purposes only and subject to change. Illustrations are artist's concept only. Specifications subject to change without notice. E. & O.E. September 2023.

2R

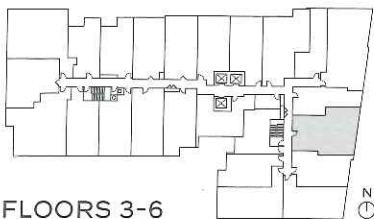
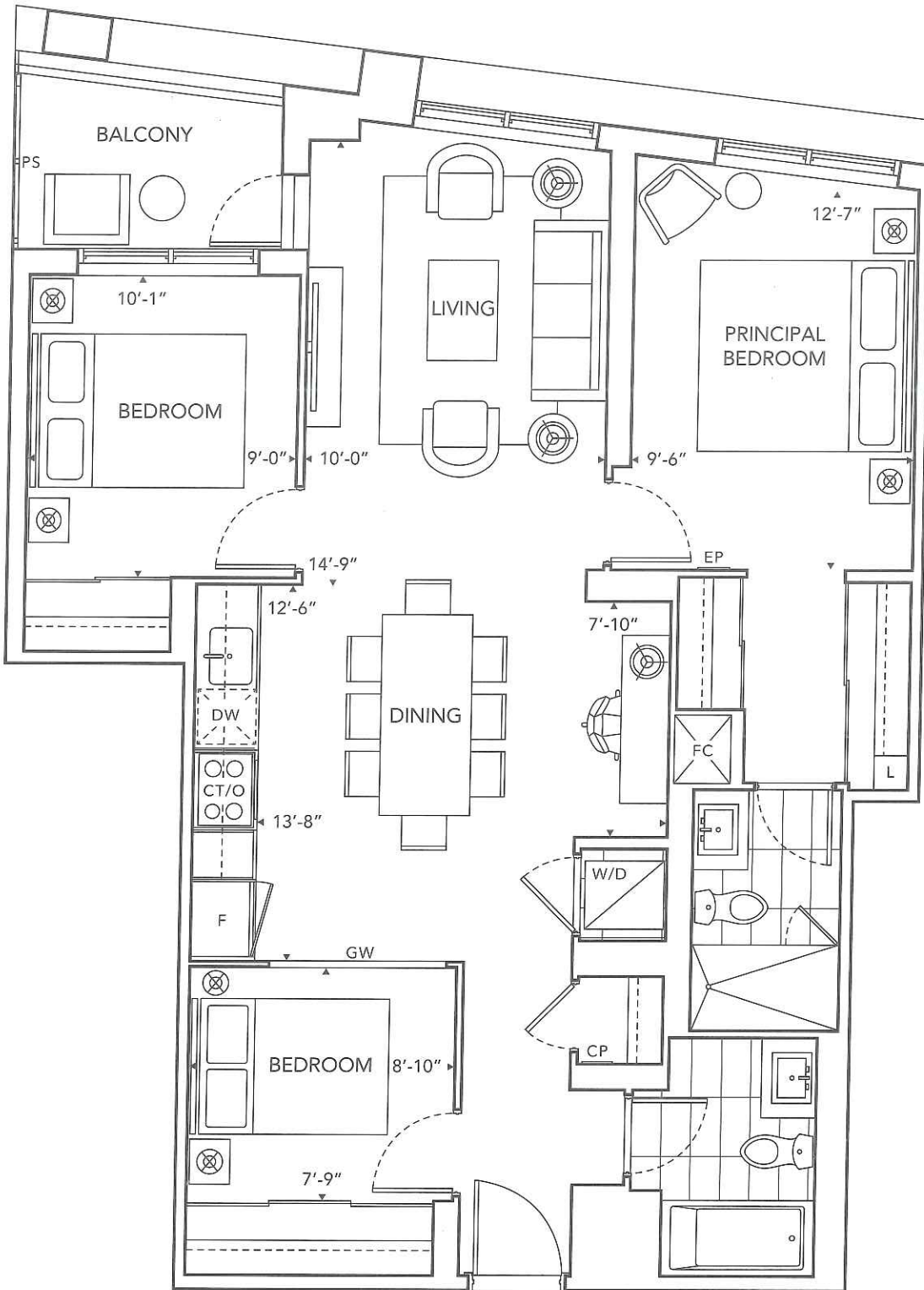
929 SQ.FT.
2 BEDROOM
2 BATH



FLOORS 5-6

3B

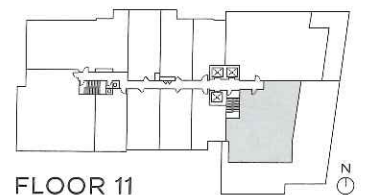
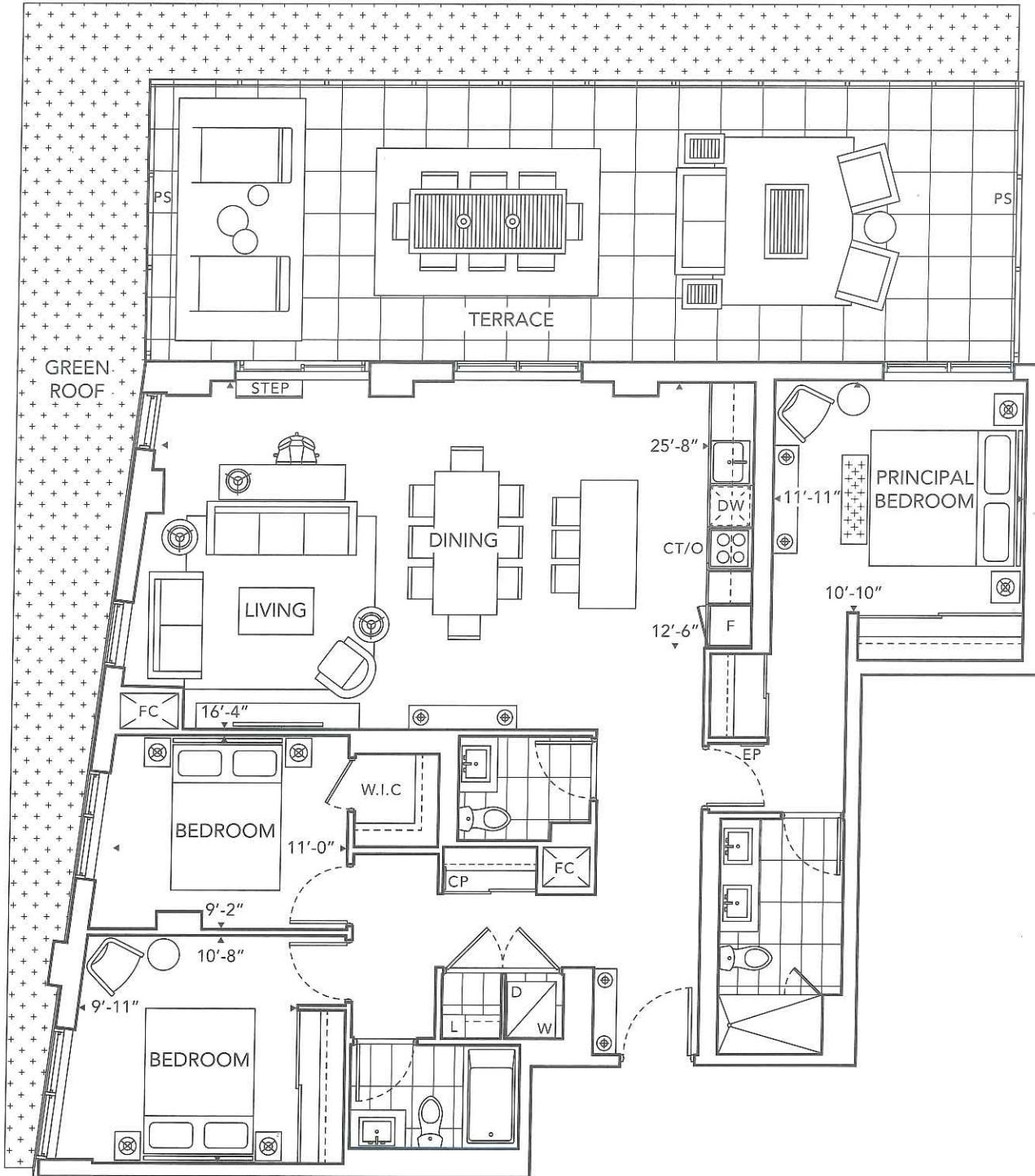
980 SQ.FT.
3 BEDROOM
2 BATH



©Tridel 2023. ®Tridel, "D" design, Tridel Built for Life, Tridel Built for Life Design, and Tridel Built Green Built for Life are registered Trademarks of Tridel Corporation. Project names and logos are Trademarks of their respective owners. All rights reserved. Building and view not to scale. All dimensions are approximate and subject to normal construction variances. Dimensions may exceed the usable floor area. Sizes and specifications subject to change without notice. Actual usable floor space may vary from the stated floor area. Furniture is displayed for illustration purposes only and does not necessarily reflect the electrical plan for the suite. Suites are sold unfurnished. Balcony and façade variations may apply, contact a sales representative for further details. Furniture, BBQs and planter locations on terraces are for illustration purposes only and subject to change. Illustrations are artist's concept only. Specifications subject to change without notice. E. & O.E. September 2023.

3LT

1,404 SQ.FT.
3 BEDROOM
2.5 BATH



FLOOR 11